



# FULL LINE CATALOG



INDUSTRIAL PROCESS AND  
COMMERCIAL VENTILATION SYSTEMS

# TWIN CITY FAN & BLOWER



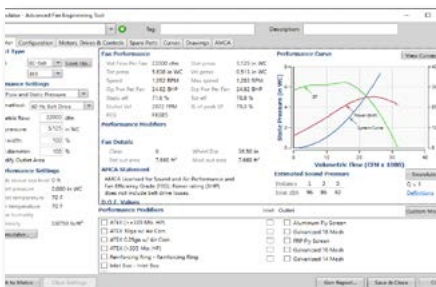
Brookings, SD  
Manufacturing Facility



Twin City Fan Singapore



Twin City Fan Europe  
Czech Republic Facility



Fan Selection Software

## WHO WE ARE

Twin City Fan & Blower is an industry-leading designer and manufacturer of high-quality custom, semi-custom and standard fans ranging from heavy-duty industrial process fans to a comprehensive line of commercial supply and exhaust fans for the HVAC plan-and-spec market. We have completed thousands of successful installations worldwide and have a proven track record for tackling the most technically complex and unique applications.

With the engineering and manufacturing capabilities to accommodate virtually every conceivable application, Twin City Fan & Blower has the knowledge and expertise to meet any requirement. Our commitment to quality and dedication to customers has been our philosophy since the company started in 1974. As a result, Twin City Fan & Blower continues to grow and provide fans throughout the world — with ten facilities in the United States and expanded manufacturing and service operations in Brazil, Singapore, India, China and Europe.













## FAN SELECTION SOFTWARE

Twin City Fan & Blower's Fan Selection Software is designed to raise the bar for fan system configurations. The software offers a dynamic interface that supports both standard and highly-engineered fans. Whether in the commercial or industrial market, Fan Selector is robust enough to handle the application. The software features an easy-to-use interface, multiple selection methods, performance curves, instant drawings and more. Our highly-intuitive software quickly allows the user to navigate through selection, configuration and quotation.





## PRODUCT INDEX

-  Centrifugal Fans ..... 8-11
-  Utility Sets ..... 12-13
-  Inline Centrifugal & Mixed Flow Fans ..... 14-17
-  Plenum Fans ..... 18-19
-  Plug Fans ..... 20-21
-  Wall Mounted Fans ..... 22-23
-  Axial Fans ..... 24-29
-  Radial Bladed Fans ..... 30-33
-  Radial Tip & High Efficiency Fans ..... 34-35
-  Pressure Blowers ..... 36-39
-  Smoke & Heat Exhaust Fans ..... 40-41
-  Quick Reference Guide ..... 42-43

## ▶ EU.TCF.COM RESOURCES

Our website offers a wealth of knowledge, including product catalogs, installation manuals and a wide variety of fan-related engineering information for more than 200 product lines. Learn more at [eu.tcf.com](http://eu.tcf.com).



Product Catalogs



Case Studies



I&M Manuals



Fan Engineering Topics



Video Library



Installation Photo Gallery



# INDUSTRIES SERVED



## PRODUCTS FOR EVERY MARKET



Foundries



Commercial Buildings



Nuclear Facilities



Hospitals & Clean Rooms

We pride ourselves on the fact that we can support an extremely diverse range of industries on a global level by delivering products that meet our customer's exact requirements. Not only are we known as a one-stop-shop for all industrial and commercial air moving applications, but Twin City Fan & Blower has earned a reputation for having the quickest turnaround and delivery times in the entire fan industry. Below is a condensed list of the industries and markets we support with a full line of products.

Industrial: Automotive, Textile, Nuclear Power, Pulp and Paper, Food Processing, Water Treatment, Petrochemical and Oil, Agriculture, Material Handling, Coal Processing, Foundries, Tunnel Ventilation, Dust Collection, Glass, Waste Management, Chemical, Recycling, Marine, Pharmaceutical, Cement and Lime, Transportation, Ethanol, Air Pollution Control, Energy Recovery, Mining and General Manufacturing

Commercial: Commercial Buildings, Laboratory & Fume Hood Exhaust, Schools, Hospitals, Hotels, Restaurants, Institutional Facilities, Retail Shopping Centers, Sports Arenas and Stadiums, Airports, Data Centers, Emergency Smoke Control, Warehouses and Distribution Centers and HVAC OEMs



## CUSTOMIZED SOLUTIONS

Our unique mass-customized approach to manufacturing ensures that you are not only getting the fan elements your project demands — you're getting a complete package of customized solutions. "Mass-customized" means you get cost efficiencies from an incredibly broad range of standard products, plus project-specific flexibility that allows us to build on and customize our exceptional offerings. Check out our Case Studies library at [www.tcf.com/resources/case-studies](http://www.tcf.com/resources/case-studies) to read about some of the customized solutions we have developed for our customers.

We strive for the highest quality at every step of the manufacturing process — fabrication, welding, machining, painting, assembly, testing and crating. We offer a wide choice of construction materials and accessories for specialty applications including fiberglass, stainless steel, aluminum, hot-dip galvanized steel, abrasion and spark resistant alloys, along with numerous protective coatings.



Robotic Welding



Powder Coating Paint System



Spinning Operations

## 5S METHODOLOGY

The use of 5S methodology in our plants helps us maintain manufacturing excellence. In simple terms, the 5S methodology helps a workplace remove items that are no longer needed (SORT), designate a place for everything and put everything in its place (STRAIGHTEN), clean the area in order to more easily identify problems (SHINE), implement color coding and labels to stay consistent with other areas (STANDARDIZE) and develop behaviors that keep the workplace organized over the long term (SUSTAIN). Our 5S program is being used in addition to other lean manufacturing initiatives.



Case Studies Library

# IN-HOUSE TESTING SERVICES



## STATE-OF-THE-ART TESTING LABORATORY

With the most sophisticated research and development testing laboratories in the industry, only Twin City Fan & Blower has the collective experience and knowledge needed to tackle the most technically complex testing requirements for the most demanding environments.

The scope of Twin City Fan & Blower's testing capabilities is very broad and covers a wide spectrum of in-house and onsite testing services. With this level of technology, we continue to provide our customers with proven solutions to their particular air movement needs while ensuring that they receive the highest quality product for their exact requirements and structural needs. This includes the evaluation of existing systems to optimize performance and reduce power consumption.



AMCA-Accredited Reverberant Sound Room



Overspeed Test Setup



AMCA 210 Performance Testing



Mechanical Run Testing

- ✓ AMCA 204 Balance and Vibration Testing
- ✓ AMCA 210 Performance Testing
- ✓ AMCA 250 Jet Fan Thrust Testing
- ✓ AMCA 260 Induced Flow Testing
- ✓ AMCA 300 Sound Testing
- ✓ High Temperature/Survivability Testing
- ✓ Mechanical Run Testing
- ✓ Narrow Band Sound and Vibration Testing
- ✓ Impact (Bump) and Overspeed Testing
- ✓ Strain Gauge Testing and Analysis
- ✓ Modal Analysis Testing
- ✓ Vibration Analysis and FFT Spectrum Analysis
- ✓ Scaled Model Testing
- ✓ Custom/OEM Product Designs



## START-UP SERVICES

Having the peace of mind that your fan is installed and operating properly prior to start-up is crucial. Twin City Fan & Blower offers a wide range of start-up services and precision checks, including inlet and impeller operational clearances, torque verification, shaft alignment, balance and vibration testing. As part of our standard start-up services, Twin City Fan & Blower field personnel will conduct a variety of inspection checks to ensure the fan is ready for start-up — all the way from the foundation bolts to the lubrication of the fan.

- ☑ Fan Assembly Inspection
- ☑ Vibration Checks
- ☑ Coupling and Sheave Laser Alignment
- ☑ Installation Assistance
- ☑ Commissioning

## FIELD SERVICES

Keeping existing fans operational is crucial to any business. At Twin City Fan & Blower, our on-site field service personnel can provide many types of service, including basic inspections, maintenance, troubleshooting, repairs and in-depth analysis. We'll keep your unit performing as it should to prevent costly down time.

- ☑ Vibration/Spectrum Analysis
- ☑ Motion Amplification
- ☑ Non-Destructive Evaluation (NDE)
- ☑ Balance & Alignment
- ☑ Preventive Maintenance
- ☑ Mechanical Inspections/Repair
- ☑ Troubleshooting/Technical Support



Coupling & Sheave Alignment



Troubleshooting Support

# CENTRIFUGAL FANS



## OVERVIEW



Model BC-SW  
Supply & Exhaust



Model BCS  
Regenerative Thermal Oxidizer



Model BCS  
Dust Collection



Models BCS and BAE  
Composting

### CENTRIFUGAL FANS

Centrifugal fans are designed for general HVAC and industrial applications where large volumes of clean air are required at low to moderate pressures. With backward inclined, backward curved, backward inclined airfoil and forward curved impeller types, centrifugal fans offer the flexibility to match the performance and application at the highest efficiency. Most models are available in single-width or double-width configurations, which allow for even higher volumes of air.

### IMPELLER TYPES

Single Thickness Backward Inclined, Backward Curved, Forward Curved, Airfoil

### TYPICAL INDUSTRIES

General HVAC (exhaust, filtration, return and supply, air of commercial buildings), Automotive, Fertilizer, Metal & Mineral Processing, Pulp & Paper, Petrochemical, Pharmaceutical, Power, Water & Wastewater Treatment

### COMMON ACCESSORIES

Access Door, Drain, Flanged Inlet/Outlet, Companion Flanges, Inlet/Outlet Screens, Shaft Guard, Bearing Guard, Belt Guard, Shaft Seal, Lube Lines, Piezometer Ring, Split Housing, Insulation Pins, Steel Wall or Aluminum Clad Insulated Housing, Inlet Box, Inlet & Outlet Dampers, External or Nested Inlet Vanes

### OPTIONAL CONSTRUCTION

High Temperature, Swingout, Split Housings, Special Materials, Spark Resistant Construction (Type A, B and C), Nominally Leak-Tight Construction, ATEX

### CERTIFICATIONS

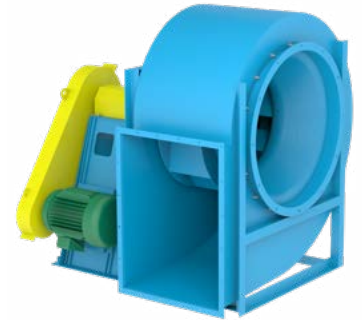
AMCA Sound/Air and FEI, UL 705 Listed for Electrical



**BAE-SW**

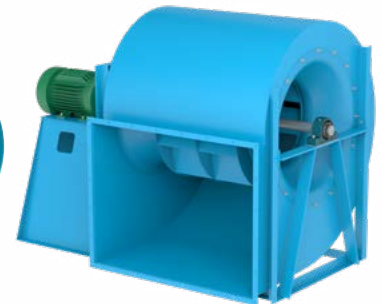
AIRFOIL IMPELLER, SWSI

- > 315 mm to 2,500 mm (12.25 to 98.25 inches) impeller diameters
- > Airflow to 396,000 m<sup>3</sup>/hour (233,100 CFM)
- > Static pressure to 4,970 Pa (20 inches w.g.)
- > AMCA licensed for Sound, Air and Fan Energy Index
- > UL 705 listing available
- > **Typical Applications:** Aeration, Forced Draft, Exhaust Applications, Air Handling Units, Process Cooling, Clean Rooms, Explosion-Proof Processes, General HVAC, Green/LEED, Filtration Systems


 CATALOG 370
**BAE-DW**

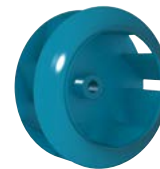
AIRFOIL IMPELLER, DWDI

- > 315 mm to 2,500 mm (12.25 to 98.25 inches) impeller diameters
- > Airflow to 712,700 m<sup>3</sup>/hour (419,500 CFM)
- > Static pressure to 3,480 Pa (14 inches w.g.)
- > AMCA licensed for Sound, Air and Fan Energy Index
- > UL 705 listing available
- > **Typical Applications:** Aeration, Air Handling Units, Exhaust Applications, Explosion-Proof Processes, Clean Rooms, General HVAC, Green/LEED


 CATALOG 370
**BAF-SW**

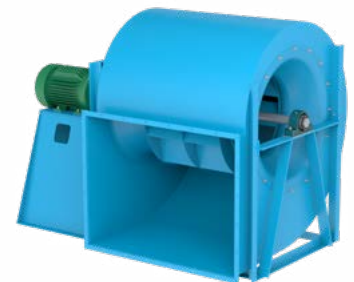
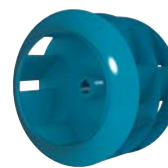
AIRFOIL IMPELLER, SWSI

- > 315 mm to 2,500 mm (12.25 to 98.25 inches) impeller diameters
- > Airflow to 471,500 m<sup>3</sup>/hour (277,500 CFM)
- > Static pressure to 4,970 Pa (20 inches w.g.)
- > AMCA licensed for Sound, Air and Fan Energy Index
- > UL 705 listing available
- > **Typical Applications:** Air Handling Units, Exhaust Applications, Explosion-Proof Processes, General HVAC, Green/LEED


 FAN SELECTOR
**BAF-DW**

AIRFOIL IMPELLER, DWDI

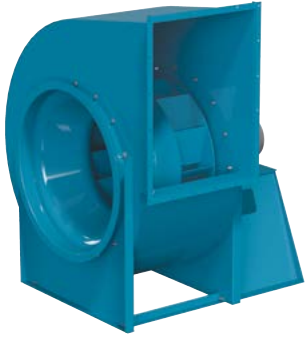
- > 315 mm to 2,500 mm (12.25 to 98.25 inches) impeller diameters
- > Airflow to 585,000 m<sup>3</sup>/hour (344,300 CFM)
- > Static pressure to 3,480 Pa (14 inches w.g.)
- > AMCA licensed for Sound, Air and Fan Energy Index
- > UL 705 listing available
- > **Typical Applications:** Air Handling Units, Exhaust Applications, Explosion-Proof Processes, General HVAC, Green/LEED


 FAN SELECTOR

## BC-SW

FLAT-BLADED BACKWARD INCLINED IMPELLER, SWSI

- > 315 mm to 2,500 mm (12.25 to 98.25 inches) impeller diameters
- > Airflow to 471,500 m<sup>3</sup>/hour (277,500 CFM)
- > Static pressure to 4,970 Pa (20 inches w.g.)
- > AMCA licensed for Sound, Air and Fan Energy Index
- > UL 705 listing available
- > **Typical Applications:** Air Pollution Control, High Temperature, Chemical/Corrosive Environments, Exhaust, Water Treatment, Filtration/Dust Collection, Explosion-Proof Processes, General HVAC, Green/LEED, General Manufacturing, Drying Applications

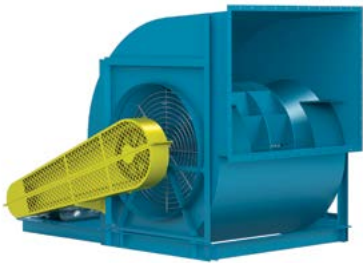


CATALOG 300

## BC-DW

FLAT-BLADED BACKWARD INCLINED IMPELLER, DWDI

- > 315 mm to 2,265 mm (12.25 to 89 inches) impeller diameters
- > Airflow to 585,000 m<sup>3</sup>/hour (344,300 CFM)
- > Static pressure to 3,480 Pa (14 inches w.g.)
- > AMCA licensed for Air and Fan Energy Index
- > UL 705 listing available
- > **Typical Applications:** Exhaust Applications, Dust Collection, Explosion-Proof Processes, General HVAC, Green/LEED



CATALOG 300

## BCS

BACKWARD CURVED IMPELLER,  
HIGH PRESSURE/HIGH VOLUME

- > 420 mm to 2,265 mm (16.5 to 89 inches) impeller diameters
- > Airflow to 475,700 m<sup>3</sup>/hour (280,000 CFM)
- > Static pressure to 9,950 Pa (40 inches w.g.)
- > AMCA licensed for Sound, Air and Fan Energy Index
- > **Typical Applications:** Air Pollution Control, High Temperature, Chemical/Corrosive Environments, Exhaust, Water Treatment, Filtration/Dust Collection, Explosion-Proof Processes, General HVAC, Green/LEED, General Manufacturing, Drying Applications

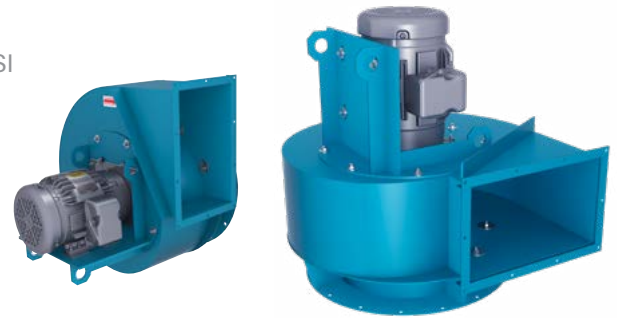


CATALOG 400

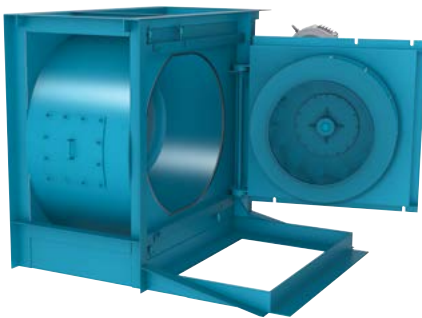
**TCBI**

FLAT-BLADED BACKWARD INCLINED CENTRIFUGAL FAN, SWSI

- > 360 mm to 575 mm (14.19 to 22.56 inches)
- > 3 HP to 30 HP
- > Airflow to 24,470 m<sup>3</sup>/hour (14,400 CFM)
- > Static pressures to 4,480 Pa (18 inches w.g.)
- > **Typical Application:** Dust Collection

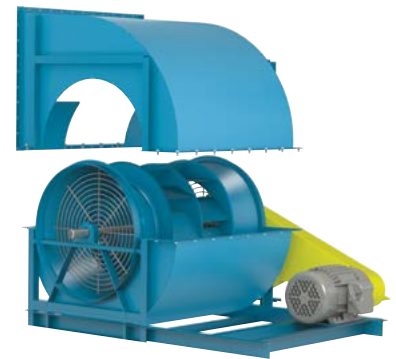

 CATALOG 330
**EASY ACCESS & SPLIT HOUSINGS**

AVAILABLE ON THE FOLLOWING MODELS



Easy Access  
Swingout Construction

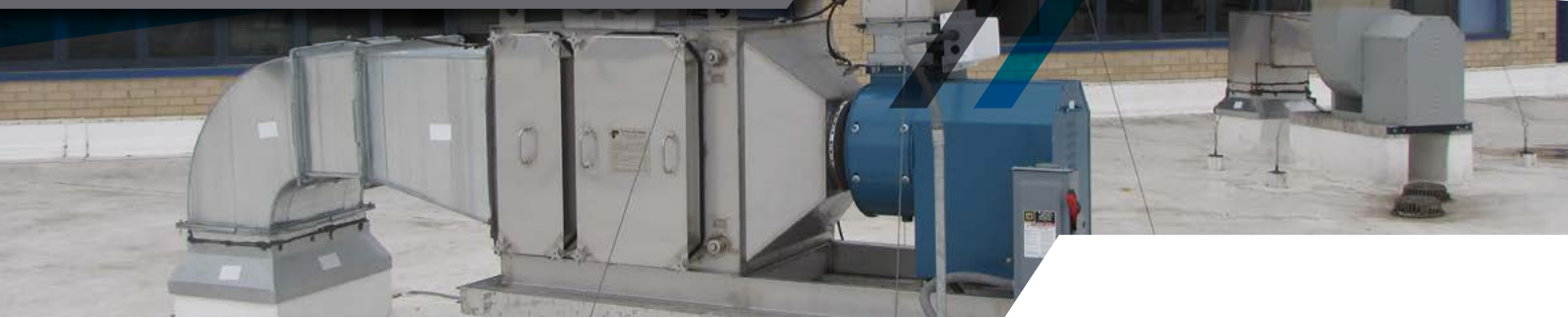
- > BC-SW & BC-DW
- > BAE-SW & BAE-DW
- > BAF-SW & BAF-DW
- > BCS
- > NFC-SW & NFC-DW



Split Housings  
(Pie-Shaped Housings Also Available)



# UTILITY SETS



## OVERVIEW



Model BCV  
Process Exhaust



Model BCV  
Fume Exhaust



Model BAV  
Clean Room Exhaust



Model BCV  
Building Exhaust

### UTILITY SETS

Utility sets are an excellent choice for general exhaust and supply requirements of commercial and light industrial applications. They are suitable for indoor usage and outdoor usage, with the addition of a weather cover to enclose the motor and drives. Fan housings are available in lock-seam galvanized steel, welded heavy-gauge steel, aluminum or stainless steel.

### IMPELLER TYPES

Flat-Bladed Backward Inclined, Airfoil, Forward Curved

### TYPICAL INDUSTRIES

Aerospace, Asphalt, Agriculture, Air Pollution Control, Automotive, Boilers, Brick, Car Wash, Cement, Chemical, Clean Rooms, Coal, Commercial Plan & Spec, Composting, Ethanol, Food & Beverage, Foundry, General Manufacturing, Glass, Green/LEED, HVAC, Industrial Processes, Institutional & Hospitality, Marine, Metal & Minerals, Microchip, Mining, Nuclear, OEM, Petrochemical, Pharmaceutical, Power Generation, Pulp & Paper, Recycling, Textile, Transportation, Water Treatment, Wind Tunnels

### COMMON ACCESSORIES

Access Door, Drain, Flanged Inlet/Outlet, Companion Flanges, Inlet/Outlet Screens, Belt Guard, Weather Cover, Shaft Seal, Shaft Cooler, Lube Lines, Piezometer Ring, Inlet Box, Two Groove Drive Minimum, Inlet & Outlet Dampers, External or Nested Inlet Vanes, Vibration Isolators, Disconnect Switches, Special Coatings

### OPTIONAL CONSTRUCTION

High Temperature, Special Materials, Spark Resistant Construction, Smoke & Heat

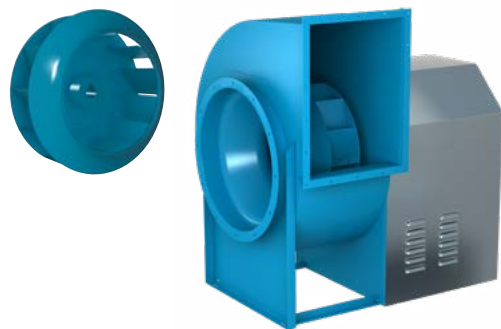
### CERTIFICATIONS

AMCA Sound/Air and FEI, UL 705 Listed for Electrical, UL 705 Supplement SC (formerly UL 762) Listed for Grease-Laden Air, UL Listed for Smoke Control Systems

## BCV

FLAT-BLADED BACKWARD INCLINED UTILITY SETS,  
BELT DRIVEN

- > 270 mm to 1,525 mm (10.5 to 60 inches) impeller diameters
- > Airflow to 133,600 m<sup>3</sup>/hour (78,660 CFM)
- > Static pressure to 1,990 Pa (8 inches w.g.)
- > AMCA licensed for Sound, Air and Fan Energy Index
- > **Typical Applications:** Data Center Exhaust, General HVAC, Elevator Shaft Exhaust/Pressurization, Restroom Exhaust, Stairwell Pressurization, Industrial Ovens, Vehicle Exhaust Generator Room Ventilation, Swimming Pool Exhaust

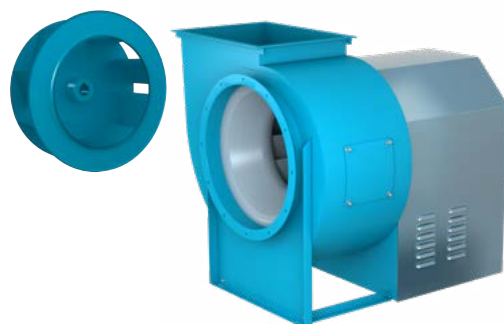


☰ CATALOG 600

## BAV

AIRFOIL UTILITY SET

- > 315 mm to 930 mm (12.25 to 36.5 inches) impeller diameters
- > Airflow to 54,500 m<sup>3</sup>/hour (32,100 CFM)
- > Static pressure to 1,990 Pa (8 inches w.g.)
- > AMCA licensed for Sound, Air and Fan Energy Index
- > **Typical Applications:** Data Center Exhaust, General HVAC, Elevator Shaft Exhaust/Pressurization, Swimming Pool Exhaust, Restroom Exhaust, Generator Room Ventilation, Stairwell Pressurization



☰ CATALOG 600

# INLINE CENTRIFUGAL & MIXED FLOW FANS



## OVERVIEW



Model QCLB  
Mechanical Room Exhaust

### INLINE CENTRIFUGAL & MIXED FLOW FANS

Inline centrifugal and mixed flow fans are designed for general HVAC and industrial applications where large volumes of clean air are required at low to moderate pressures. Inline centrifugal and mixed flow fans provide the performance of a centrifugal fan with the space saving advantages of an axial-type fan. With a variety of designs to choose from, these fans offer the flexibility to meet the performance and application requirements at very high efficiencies.

### IMPELLER TYPES

Backward Inclined, Backward Inclined Airfoil, Single Surface Mixed Flow and True Airfoil (double surface – hollow) Mixed Flow

### TYPICAL INDUSTRIES

General HVAC (exhaust, filtration, return and supply, air of commercial buildings), Air Pollution Control, Automotive, Chemical, Fertilizer, Food & Beverage, Laboratory Exhaust, Metal & Mineral Processing and Water & Wastewater Treatment

### COMMON ACCESSORIES

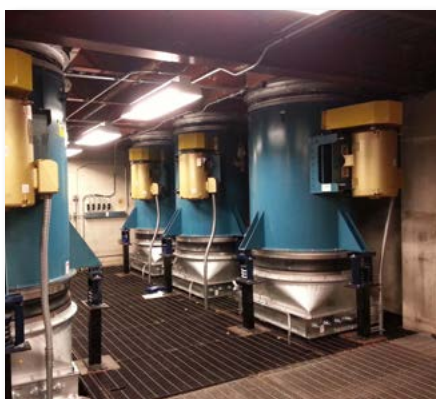
Access Doors, Belt Guards, Belt Tube, Companion Flanges, Disconnect Switches, Inlet/Outlet Screens, Inlet Vanes, Piezometer Ring Airflow Measurement System, Pressure Transducers, Special Coatings, Vibration Isolation and Weather Covers

### OPTIONAL CONSTRUCTION

Spark Resistant Construction (Type A, B and C), Easy Access Construction

### CERTIFICATIONS

AMCA Sound/Air and FEI, UL 705 Listed for Electrical, UL 705 Supplement SC (formerly UL 762) Listed for Grease-Laden Air, UL Listed for Smoke Control Systems



Model TSL  
Exhaust in Research Lab



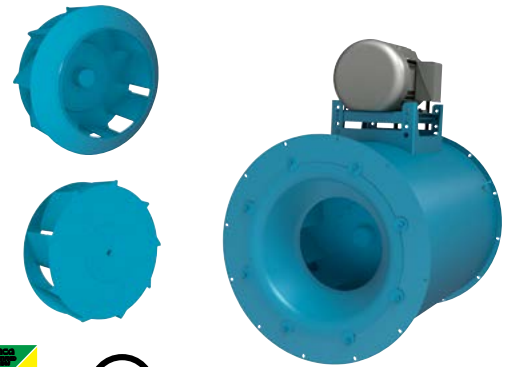
Model QSL  
Spray Paint Booth Exhaust



## TSL

### TUBULAR INLINE CENTRIFUGAL FANS

- > 315 mm to 2,265 mm (12.25 to 89 inches) impeller diameters
- > Airflow to 376,700 m<sup>3</sup>/hour (221,700 CFM)
- > Static pressure to 2,240 Pa (9 inches w.g.)
- > AMCA licensed for Sound, Air and Fan Energy Index
- > UL 705 listed
- > **Typical Applications:** Data Center Exhaust, General HVAC, Generator Room Ventilation, Odor Control, Wastewater Treatment



CATALOG 1001

## QCLB

### LOW PRESSURE MIXED FLOW FANS

- > 315 mm to 1,855 mm (12.25 to 73 inches) impeller diameters
- > Airflow to 178,400 m<sup>3</sup>/hour (105,000 CFM)
- > Static pressure to 1,120 Pa (4.5 inches w.g.)
- > AMCA licensed for Sound, Air and Fan Energy Index
- > UL 705 listed
- > **Typical Applications:** Data Center Exhaust, General HVAC, Generator Room Ventilation



CATALOG 1070

## QCLBR

### LOW PRESSURE RESTAURANT MIXED FLOW FANS, UL LISTED FOR THE EXHAUST OF GREASE-LADEN AIR

- > 315 mm to 1,855 mm (12.25 to 73 inches) impeller diameters
- > Airflow to 178,400 m<sup>3</sup>/hour (105,000 CFM)
- > Static pressure to 1,120 Pa (4.5 inches w.g.)
- > AMCA licensed for Sound, Air and Fan Energy Index
- > UL 705 Supplement SC (formerly UL 762) listed for grease-laden air
- > **Typical Applications:** Kitchen Exhaust, Dishwasher Exhaust



CATALOG 1070

## QCLBSH

### LOW PRESSURE SMOKE & HEAT MIXED FLOW FANS, UL LISTED FOR SMOKE CONTROL SYSTEMS

- > 315 mm to 1,855 mm (12.25 to 73 inches) impeller diameters
- > Airflow to 178,400 m<sup>3</sup>/hour (105,000 CFM)
- > Static pressure to 1,120 Pa (4.5 inches w.g.)
- > AMCA licensed for Sound, Air and Fan Energy Index
- > UL listed for Smoke Control Systems
- > **Typical Applications:** Elevator Shaft Exhaust/Pressurization, Emergency Smoke Exhaust, Stairwell Pressurization



CATALOG 1070



CATALOG 1060



### QSL

QUIET MIXED FLOW FANS

- > 465 mm to 2,260 mm (18.25 to 89 inches) impeller diameters
- > Airflow to 271,800 m<sup>3</sup>/hour (160,000 CFM)
- > Static pressure to 1,990 Pa (8 inches w.g.)
- > AMCA licensed for Sound, Air and Fan Energy Index
- > UL 705 listed
- > **Typical Applications:** Air Handling Units, Data Center Exhaust, General HVAC, Generator Room Ventilation, Paint Booth Exhaust



CATALOG 1060



### QSLR

QUIET MIXED FLOW RESTAURANT FANS,  
UL LISTED FOR THE EXHAUST OF GREASE-LADEN AIR

- > 465 mm to 2,260 mm (18.25 to 89 inches) impeller diameters
- > Airflow to 271,800 m<sup>3</sup>/hour (160,000 CFM)
- > Static pressure to 1,990 Pa (8 inches w.g.)
- > AMCA licensed for Sound, Air and Fan Energy Index
- > UL 705 Supplement SC (formerly UL 762) listed for grease-laden air
- > **Typical Application:** Kitchen Exhaust



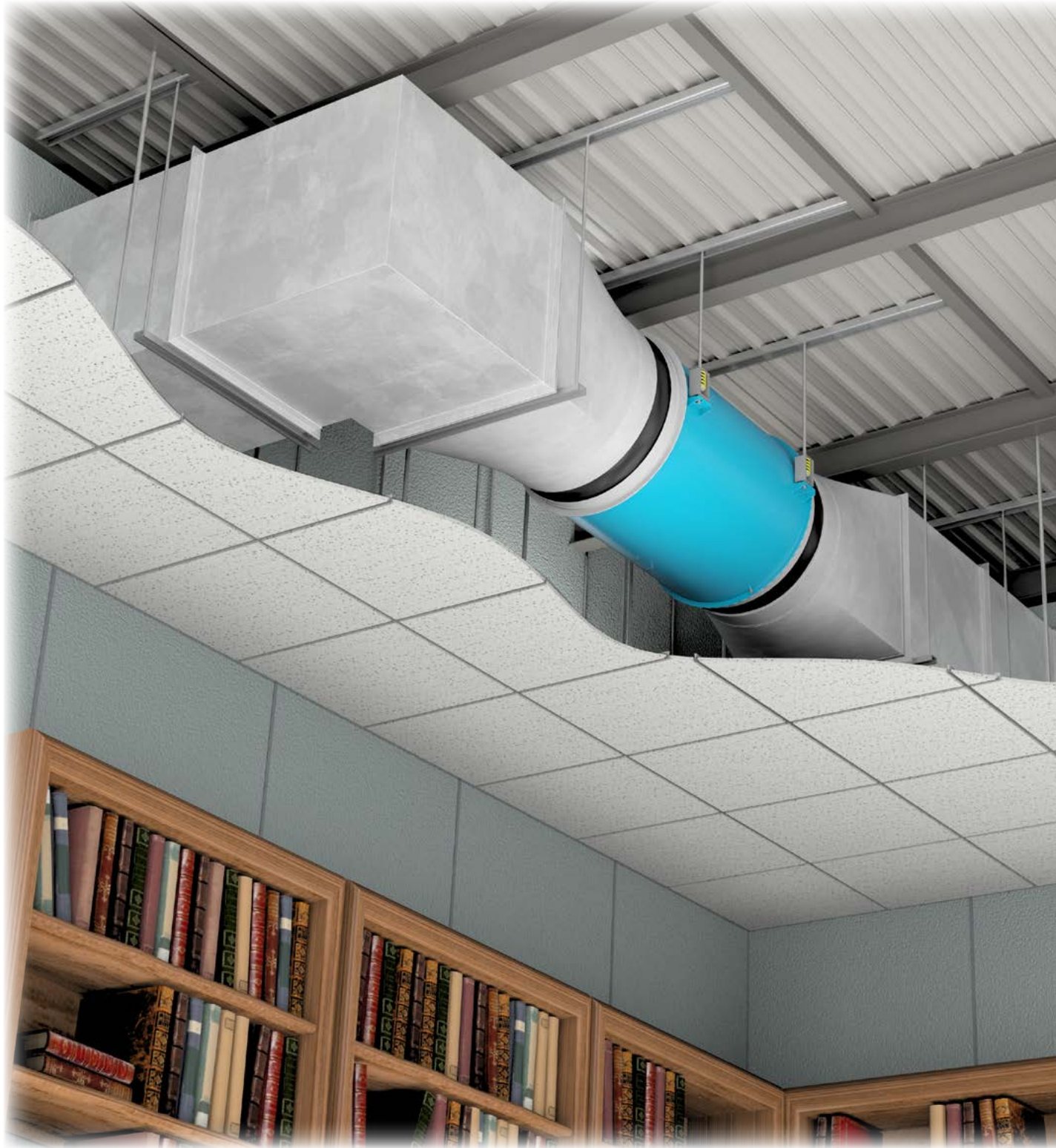
CATALOG 1060



### QSLSH

QUIET MIXED FLOW SMOKE & HEAT REMOVAL FANS,  
UL LISTED FOR SMOKE CONTROL SYSTEMS

- > 465 mm to 2,260 mm (18.25 to 89 inches) impeller diameters
- > Airflow to 271,800 m<sup>3</sup>/hour (160,000 CFM)
- > Static pressure to 1,990 Pa (8 inches w.g.)
- > AMCA licensed for Sound, Air and Fan Energy Index
- > UL listed for Smoke Control Systems
- > **Typical Applications:** Elevator Shaft Exhaust/Pressurization, Emergency Smoke Exhaust, Stairwell Pressurization



Library Exhaust Application (Model QSL)

# PLENUM FANS



## OVERVIEW



Model EPFN  
Air Handling Unit



Model EPFN  
Built-Up Air Handling Unit



Model EPF  
Air Handling Unit



Model EPFN  
Supply Air Fans in Air Handling Unit

### PLENUM FANS

Plenum fans are designed for general HVAC applications where large volumes of clean air are required at low to moderate pressures. Backward inclined airfoil impellers provide high efficiency, performance and sound characteristics needed for the most stringent HVAC applications. With housed or open designs, as well as belt or direct drive options, plenum fans provide the flexibility to match the performance and application at the highest efficiency.

### APPLICATIONS

Air-Conditioning/Heating Units, Air-Make-Up Units, Clean-Room Filtration Systems, Supply Air Systems

### IMPELLER TYPES

Backward Inclined Airfoil (9-Blades or 12-Blades)

### TYPICAL INDUSTRIES

General HVAC (exhaust, filtration, return and supply, air of commercial buildings and air handling units)

### COMMON ACCESSORIES

Inlet/Outlet Screen, Piezometer Ring Airflow Measurement System, Pressure Transducers, Protective Enclosure, Special Coatings, Vibration Isolation, Aero Acoustic Diffuser™

### OPTIONAL CONSTRUCTION

Special Impeller Width

### CERTIFICATIONS

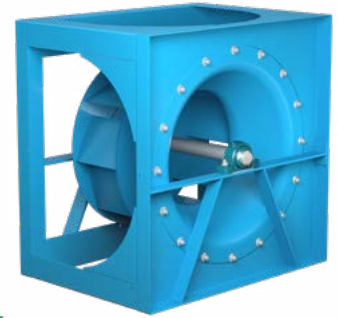
AMCA Sound/Air and FEI



**EPF**

PLENUM FAN, AIRFOIL IMPELLER, 9-BLADES, ARRANGEMENT 3

- > 315 mm to 2,265 mm (12.25 to 89 inches) impeller diameters
- > Airflow to 475,700 m<sup>3</sup>/hour (280,000 CFM)
- > Static pressure to 2,490 Pa (10 inches w.g.)
- > AMCA licensed for Sound, Air and Fan Energy Index
- > **Typical Applications:** Air Handling Units, General HVAC, Make-Up Air Units, Elevator Shaft Exhaust/Pressurization, Hospital Exhaust, Stairwell Pressurization, School Exhaust, Air Filtration, Generator Room Ventilation, Kitchen Exhaust, Dishwasher Exhaust

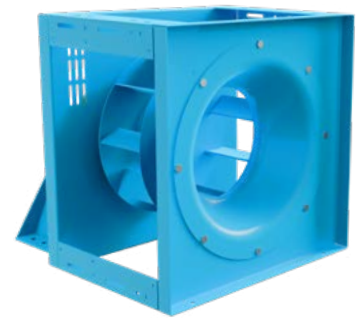


CATALOG 470

**EPFN**

PLENUM FAN, AIRFOIL IMPELLER, 9-BLADES, ARRANGEMENT 1 & 4

- > 315 mm to 2,265 mm (12.25 to 89 inches) impeller diameters
- > Airflow to 475,700 m<sup>3</sup>/hour (280,000 CFM)
- > Static pressure to 2,490 Pa (10 inches w.g.)
- > AMCA licensed for Sound, Air and Fan Energy Index
- > **Typical Applications:** Air Handling Units, General HVAC, Make-Up Air Units, Elevator Shaft Exhaust/Pressurization, Hospital Exhaust, Stairwell Pressurization, School Exhaust, Air Filtration, Generator Room Ventilation, Kitchen Exhaust, Dishwasher Exhaust

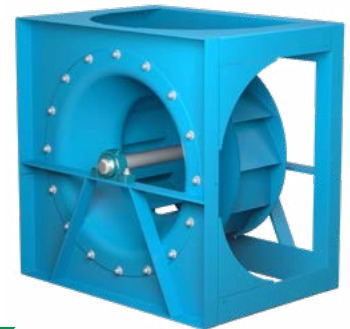


CATALOG 470

**EPQ**

PLENUM FAN, AIRFOIL IMPELLER, 12-BLADES, ARRANGEMENT 3

- > 315 mm to 2,265 mm (12.25 to 89 inches) impeller diameters
- > Airflow to 475,700 m<sup>3</sup>/hour (280,000 CFM)
- > Static pressure to 2,980 Pa (12 inches w.g.)
- > AMCA licensed for Sound, Air and Fan Energy Index
- > **Typical Applications:** Air Handling Units, General HVAC, Make-Up Air Units, Elevator Shaft Exhaust/Pressurization, Hospital Exhaust, Stairwell Pressurization, School Exhaust, Air Filtration, Generator Room Ventilation, Kitchen Exhaust, Dishwasher Exhaust

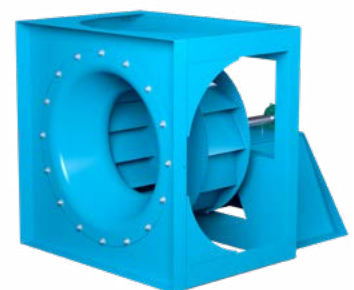


CATALOG 470

**EPQN**

PLENUM FAN, AIRFOIL IMPELLER, 12-BLADES, ARRANGEMENT 1 & 4

- > 315 mm to 2,265 mm (12.25 to 89 inches) impeller diameters
- > Airflow to 475,700 m<sup>3</sup>/hour (280,000 CFM)
- > Static pressure to 2,980 Pa (12 inches w.g.)
- > AMCA licensed for Sound, Air and Fan Energy Index
- > **Typical Applications:** Air Handling Units, General HVAC, Make-Up Air Units, Elevator Shaft Exhaust/Pressurization, Hospital Exhaust, Stairwell Pressurization, School Exhaust, Air Filtration, Generator Room Ventilation, Kitchen Exhaust, Dishwasher Exhaust



CATALOG 470

# PLUG FANS



## OVERVIEW



Model BCPL  
Baking Oven

### PLUG FANS

Plug fans offer great versatility for complex system configurations. Equipped with a gusseted mounting panel, they are mounted directly to the plenum wall separating the motor and drive components from the process air. Plug fans provide high efficiency recirculation air with the benefit of easy installation and removal.

### APPLICATIONS

Air Curtains, Dyers, Freezers, High Temperature, Kilns, Ovens, Process Applications, Product Cooling, Re-Circulation, Air Heaters, Ceiling, Wall and Floor Panel Plenums, Degreasers, Dryers, Dust Collectors, Evaporators, Packaged Air Handlers, Parts Washers, Penthouses, Smoke Houses, Space Heaters, Spray Booths and other High Temperature Applications

### IMPELLER TYPES

Flat-Bladed Backward Inclined and Backward Curved

### TYPICAL INDUSTRIES

Automotive, Industrial Cooling and Ovens

### COMMON ACCESSORIES

Belt Guards, Bearing Guards, Extended Lube Lines, Forklift Lifting Tubes, Integral Inlet Cone, Insulated Plug, Piezometer Ring Airflow Measurement System, Shaft Cooler (Slinger), Variable Inlet Vanes, Housings

### OPTIONAL CONSTRUCTION

ATEX Construction, High-Temperature Construction to 1000° F, Pedestal Design for Floor Mounting, Spark Resistant Construction (Type A, B and C), Special Materials (Stainless Steel, Normalized Steel), Special Impeller Width & Diameter



Model BEPL  
Baking Oven



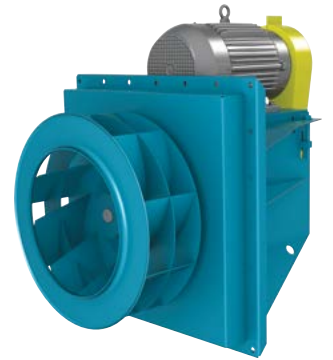
Model BFPL  
Baking Oven



## BEPL

HIGH EFFICIENCY PLUG FAN, BACKWARD CURVED

- > 315 mm to 1,245 mm (12.4 to 49 inches) impeller diameters
- > Airflow to 129,100 m<sup>3</sup>/hour (76,000 CFM)
- > Static pressure to 2,980 Pa (12 inches w.g.)
- > Airstream temperatures to 538°C (1,000°F)
- > **Typical Applications:** Air Curtains, Dyers, Freezers, High Temperature, Kilns, Ovens, Product Cooling, Re-Circulation, Air Heaters, Ceiling, Degreasers, Dryers, Dust Collectors, Evaporators, Packaged Air Handlers, Parts Washers, Penthouses, Smoke Houses, Space Heaters, Spray Booths



 CATALOG 355

## BFPL

HIGH EFFICIENCY PLUG FAN, BACKWARD CURVED

- > 315 mm to 1,245 mm (12.4 to 49 inches) impeller diameters
- > Airflow to 129,100 m<sup>3</sup>/hour (76,000 CFM)
- > Static pressure to 2,980 Pa (12 inches w.g.)
- > Airstream temperatures to 538°C (1,000°F)
- > **Typical Applications:** Air Curtains, Dyers, Freezers, High Temperature, Kilns, Ovens, Product Cooling, Re-Circulation, Air Heaters, Ceiling, Degreasers, Dryers, Dust Collectors, Evaporators, Packaged Air Handlers, Parts Washers, Penthouses, Smoke Houses, Space Heaters, Spray Booths



 CATALOG 360

## BCPL

PLUG FAN, BC BACKWARD INCLINED IMPELLER  
NON-HVAC APPLICATIONS

- > 315 mm to 1,245 mm (12.25 to 49 inches) impeller diameters
- > Airflow to 98,400 m<sup>3</sup>/hour (57,900 CFM)
- > Static pressure to 1,990 Pa (8 inches w.g.)
- > Airstream temperatures to 538°C (1,000°F)
- > **Typical Applications:** Air Curtains, Dyers, Freezers, High Temperature, Kilns, Ovens, Product Cooling, Re-Circulation, Air Heaters, Ceiling, Degreasers, Dryers, Dust Collectors, Evaporators, Packaged Air Handlers, Parts Washers, Penthouses, Smoke Houses, Space Heaters, Spray Booths



 CATALOG 350

# WALL MOUNTED FANS



## OVERVIEW



Model WPB  
Warehouse Exhaust

### WALL MOUNTED FANS

Wall mounted fans are designed for cost-effective, general ventilation. They are available in direct and belt driven models, with aluminum or steel impellers. Fixed or adjustable pitch models are offered to meet a variety of application requirements.



Model WPB  
Generator Room Exhaust

### IMPELLER TYPES

Fixed Pitch Fabricated Steel & Cast Aluminum, Adjustable Pitch Cast Aluminum

### TYPICAL INDUSTRIES

Agriculture, Air Pollution Control, Automotive, Boilers, Brick, Car Wash, Commercial Plan & Spec, Composting, Ethanol, Food & Beverage, Foundry, General Manufacturing, Glass, HVAC, Industrial Processes, Institutional & Hospitality, Metal & Minerals, Mining, OEM, Petrochemical, Power Generation, Pulp & Paper, Recycling, Textile and Water Treatment



Model WPD  
Warehouse Exhaust

### COMMON ACCESSORIES

Wall Boxes, Wall Collars, OSHA Motor Side Guards, Filter Boxes, Weather Hoods, Backdraft Dampers, Damper Guards, Screens, Extended Lube Lines, Special Coatings, Disconnect Switches and Single Point Wiring

### CERTIFICATIONS

AMCA Sound/Air and FEI, UL 705 Listed for Electrical



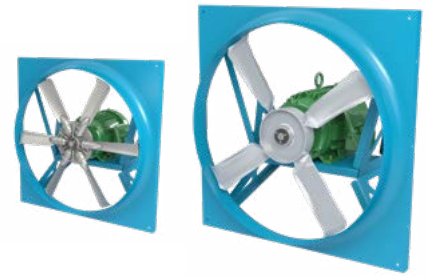
Model TCWPX  
General Exhaust



## TCWPX / TCWPZ

WALL MOUNTED FAN, ADJUSTABLE & FIXED PITCH BLADES

- > 305 mm to 1,830 mm (12 to 72 inches) impeller diameters
- > Airflow to 144,400 m<sup>3</sup>/hour (85,000 CFM)
- > Static pressure to 370 Pa (1.5 inches w.g.)
- > **Typical Applications:** Data Center Exhaust, General HVAC, Generator Room Ventilation, Sidewall Exhaust and Supply



CATALOG AX510

## WPD

WALL MOUNTED FAN, MEDIUM-DUTY, DIRECT DRIVE

- > 355 mm to 1,220 mm (14 to 48 inches) impeller diameters
- > Airflow to 60,000 m<sup>3</sup>/hour (35,300 CFM)
- > Static pressure to 250 Pa (1 inch w.g.)
- > AMCA licensed for Sound, Air and Fan Energy Index
- > UL 705 listed
- > **Typical Applications:** Data Center Exhaust, General HVAC, Generator Room Ventilation, Sidewall Exhaust and Supply



CATALOG 4820

## WPB

WALL MOUNTED FAN, LIGHT- & MEDIUM-DUTY, BELT DRIVEN

- > 535 mm to 1,525 mm (21 to 60 inches) impeller diameters
- > Airflow to 106,700 m<sup>3</sup>/hour (62,800 CFM)
- > Static pressure to 250 Pa (1 inch w.g.)
- > AMCA licensed for Sound, Air and Fan Energy Index
- > UL 705 listed
- > **Typical Applications:** Data Center Exhaust, General HVAC, Generator Room Ventilation, Sidewall Exhaust and Supply



CATALOG 4820

## TCPE

WALL MOUNTED FAN, LIGHT-DUTY, EXHAUST, DIRECT DRIVE

- > 205 mm to 610 mm (8 to 24 inches) impeller diameters
- > Airflow to 12,900 m<sup>3</sup>/hour (7,615 CFM)
- > Static pressure to 160 Pa (0.625 inches w.g.)
- > AMCA licensed for Sound, Air and Fan Energy Index
- > **Typical Applications:** General HVAC, Generator Room Ventilation, Sidewall Exhaust and Supply



**GRIDSMART**  
Available With  
GridSmart™ EC Motors



CATALOG 4800

# AXIAL FANS



## OVERVIEW



Model TCTS  
Vapor Dispersion



Model TC VX - Vertical Roof Mount  
Exhaust



Model TC VA  
Hospital Exhaust



Model TC VA  
Paint Booth Exhaust

### AXIAL FANS

Tubeaxial fans are designed to handle a wide range of requirements, from general ventilation to process air supply. The mounting flexibility makes it an ideal choice for many industrial and commercial applications. Units are available as direct or belt driven, with steel or aluminum impellers that are fixed or adjustable blade pitch.

Vaneaxial fans are designed for applications where large volumes of air are required at moderate to high pressures. Direct and belt driven models, with fixed and adjustable blade impellers, are available. The tubular design and high impeller efficiency provides maximum performance while using minimal space.

### IMPELLER TYPES

Fixed Pitch Fabricated Steel and Cast Aluminum, Adjustable Pitch Cast Aluminum

### TYPICAL INDUSTRIES

Aerospace, Agriculture, Air Pollution Control, Automotive, Boilers, Brick, Car Wash, Chemical, Clean Rooms, Composting, Ethanol, Food & Beverage, Foundry, General Manufacturing, Glass, Green/LEED, HVAC, Industrial Processes, Institutional & Hospitality, Marine, Metal & Minerals, Microchip, Mining, Nuclear, OEM, Petrochemical, Pharmaceutical, Power Generation, Pulp & Paper, Recycling, Textile, Transportation, Water Treatment, Wind Tunnels

### COMMON ACCESSORIES

Access Doors, Inlet/Outlet Screens and Guards, Inlet/Outlet Companion Flanges, Belt Guards, Motor Covers, Weather Covers, Inlet Bells, Inlet/Outlet Cones, Special Coatings and Disconnect Switches

### OPTIONAL CONSTRUCTION

Spark Resistant Construction (Type A, B and C), High Temperature Construction, Reverse Flow Configuration, High Moisture Modification, Swingout and Clamshell Construction

### CERTIFICATIONS

AMCA Sound/Air and FEI, UL 705 Listed for Electrical, UL Listed for Smoke Control Systems

## TD

TUBEAXIAL FAN, DIRECT DRIVE

- > 355 mm to 1,220 mm (14 to 48 inches) impeller diameters
- > Airflow to 72,900 m<sup>3</sup>/hour (42,900 CFM)
- > Static pressure to 370 Pa (1.5 inches w.g.)
- > AMCA licensed for Sound, Air and Fan Energy Index
- > UL 705 listed
- > **Typical Applications:** Data Center Exhaust, General HVAC, Parking Garage Ventilation



CATALOG 4830

## TB

TUBEAXIAL FAN, BELT DRIVEN

- > 355 mm to 1,525 mm (14 to 60 inches) impeller diameters
- > Airflow to 140,300 m<sup>3</sup>/hour (82,600 CFM)
- > Static pressure to 370 Pa (1.5 inches w.g.)
- > AMCA licensed for Sound, Air and Fan Energy Index
- > UL 705 listed
- > **Typical Applications:** Data Center Exhaust, General HVAC, General Rooftop Exhaust, Parking Garage Ventilation



CATALOG 4830

## TBSH

TUBEAXIAL FAN, BELT DRIVEN

UL LISTED FOR SMOKE CONTROL SYSTEMS

- > 610 mm to 1,525 mm (24 to 60 inches) impeller diameters
- > Airflow to 140,300 m<sup>3</sup>/hour (82,600 CFM)
- > Static pressure to 310 Pa (1.25 inches w.g.)
- > AMCA licensed for Sound, Air and Fan Energy Index
- > UL listed for Smoke Control Systems
- > **Typical Applications:** Elevator Shaft Exhaust/Pressurization, Emergency Smoke Exhaust, Stairwell Pressurization



CATALOG 4830



CATALOG AX250



## TCTS

TUBEAXIAL FAN, STEEL IMPELLER

- > 305 mm to 1,375 mm (12 to 54 inches) impeller diameters
- > Airflow to 135,900 m<sup>3</sup>/hour (80,000 CFM)
- > Static pressure to 990 Pa (4 inches w.g.)
- > UL 705 listing available
- > **Typical Applications:** Air Pollution Control, Heat Transfer Equipment Testing, Odor Control, Wastewater Treatment



CATALOG AX250



## TCTSSH

TUBEAXIAL FAN, STEEL IMPELLER  
UL LISTED FOR SMOKE CONTROL SYSTEMS

- > 305 mm to 1,375 mm (12 to 54 inches) impeller diameters
- > Airflow to 135,900 m<sup>3</sup>/hour (80,000 CFM)
- > Static pressure to 990 Pa (4 inches w.g.)
- > UL listed for Smoke Control Systems
- > **Typical Applications:** Elevator Shaft Exhaust/Pressurization, Emergency Smoke Exhaust, Stairwell Pressurization



CATALOG AX200



## TCTA

TUBEAXIAL FAN, CAST ALUMINUM IMPELLER

- > 305 mm to 1,525 mm (12 to 60 inches) impeller diameters
- > Airflow to 163,100 m<sup>3</sup>/hour (96,000 CFM)
- > Static pressure to 1,240 Pa (5 inches w.g.)
- > UL 705 listing available
- > **Typical Applications:** Air Pollution Control, General HVAC, Clean Room HEPA Filtration, Odor Control, Parking Garage Ventilation, Wastewater Treatment



CATALOG AX100



## TCVA

VANEAXIAL FAN, CAST ALUMINUM IMPELLER

- > 305 mm to 1,525 mm (12 to 60 inches) impeller diameters
- > Airflow to 175,000 m<sup>3</sup>/hour (103,000 CFM)
- > Static pressure to 1,740 Pa (7 inches w.g.)
- > AMCA licensed for Air and Fan Energy Index
- > UL 705 listing available
- > **Typical Applications:** Air Pollution Control, Odor Control, Clean Room HEPA Filtration, Parking Garage Ventilation, Wastewater Treatment

## TCVX

VANEAXIAL FAN, ADJUSTABLE PITCH BLADES

- > 460 mm to 2,135 mm (18 to 84 inches) impeller diameters
- > Airflow to 395,900 m<sup>3</sup>/hour (233,000 CFM)
- > Static pressure to 2,490 Pa (10 inches w.g.)
- > AMCA licensed for Sound, Air and Fan Energy Index
- > UL 705 listing available
- > **Typical Applications:** Air Pollution Control, Odor Control, Clean Room HEPA Filtration, Parking Garage Ventilation, Wastewater Treatment



CATALOG AX300

## TCVSSH

VANEAXIAL FAN, STEEL IMPELLER  
UL LISTED FOR SMOKE CONTROL SYSTEMS

- > 305 mm to 1,375 mm (12 to 54 inches) impeller diameters
- > Airflow to 135,900 m<sup>3</sup>/hour (80,000 CFM)
- > Static pressure to 990 Pa (4 inches w.g.)
- > UL listed for Smoke Control Systems
- > **Typical Applications:** Elevator Shaft Exhaust/Pressurization, Emergency Smoke Exhaust, Stairwell Pressurization



CATALOG AX255

## TCVS

VANEAXIAL FAN, STEEL IMPELLER

- > 305 mm to 1,375 mm (12 to 54 inches) impeller diameters
- > Airflow to 135,900 m<sup>3</sup>/hour (80,000 CFM)
- > Static pressure to 990 Pa (4 inches w.g.)
- > UL 705 listing available
- > **Typical Applications:** Air Pollution Control, Heat Transfer Equipment Testing, Odor Control, Wastewater Treatment



CATALOG AX255

## TCBS

PAINT BOOTH EXHAUST TUBEAXIAL FAN, BELT DRIVEN

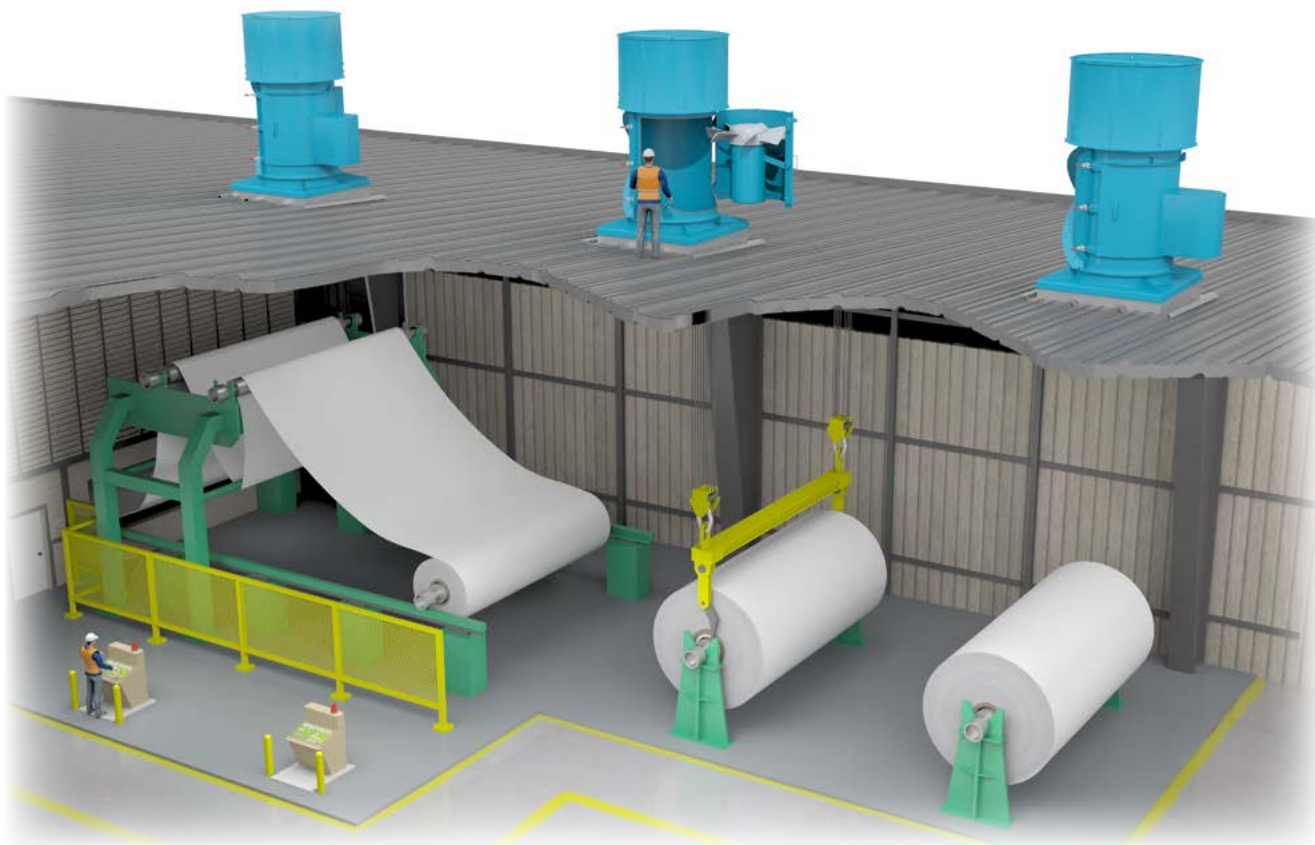
- > 305 mm to 1,070 mm (12 to 42 inches) impeller diameters
- > Airflow to 61,300 m<sup>3</sup>/hour (36,100 CFM)
- > Static pressure to 310 Pa (1.25 inches w.g.)
- > **Typical Application:** Spray Booth Exhaust



CATALOG AX220

# Axial Swingout & Clamshell Construction

Easy access for frequent cleaning



Full Swingout

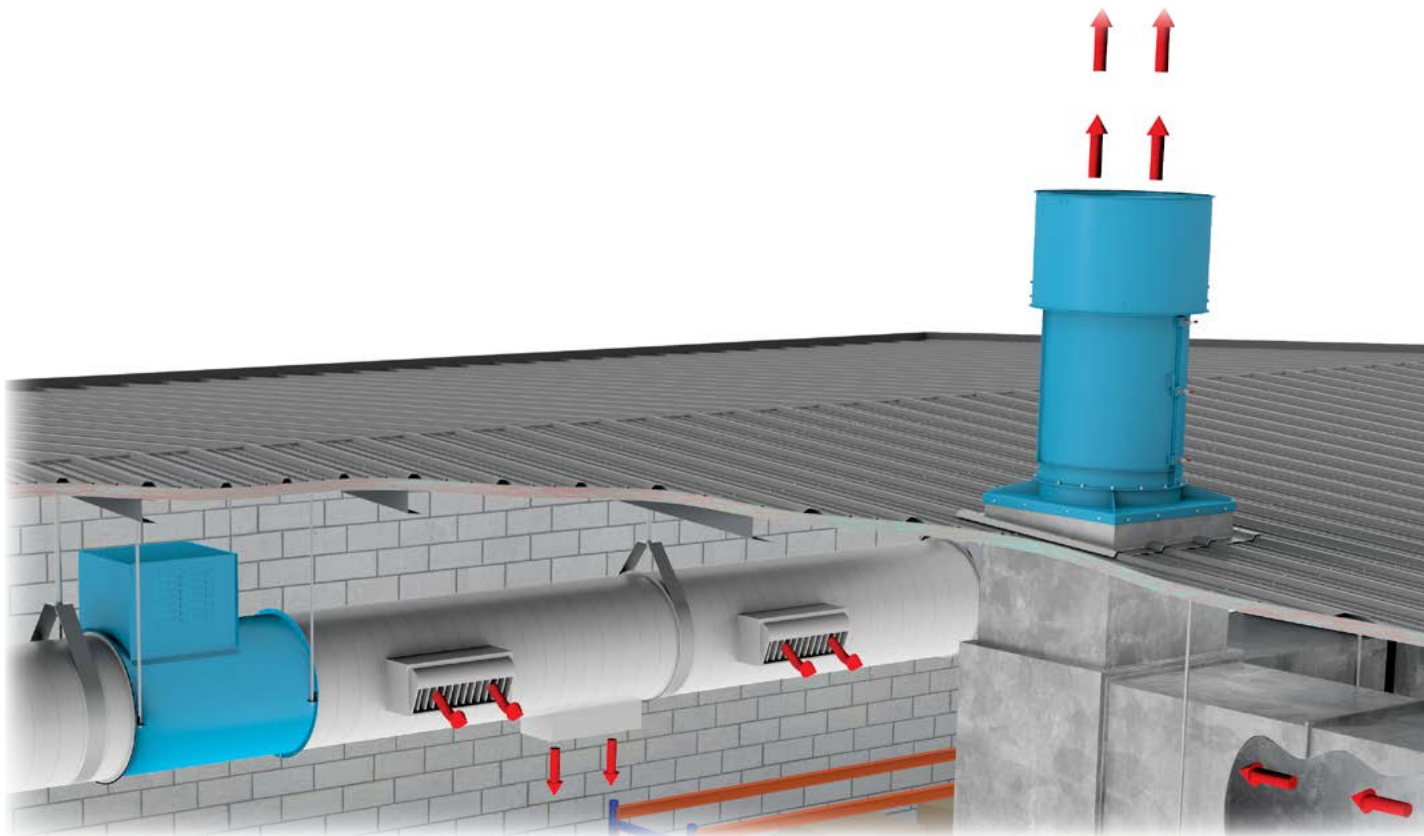


Single & Double Door Clamshell

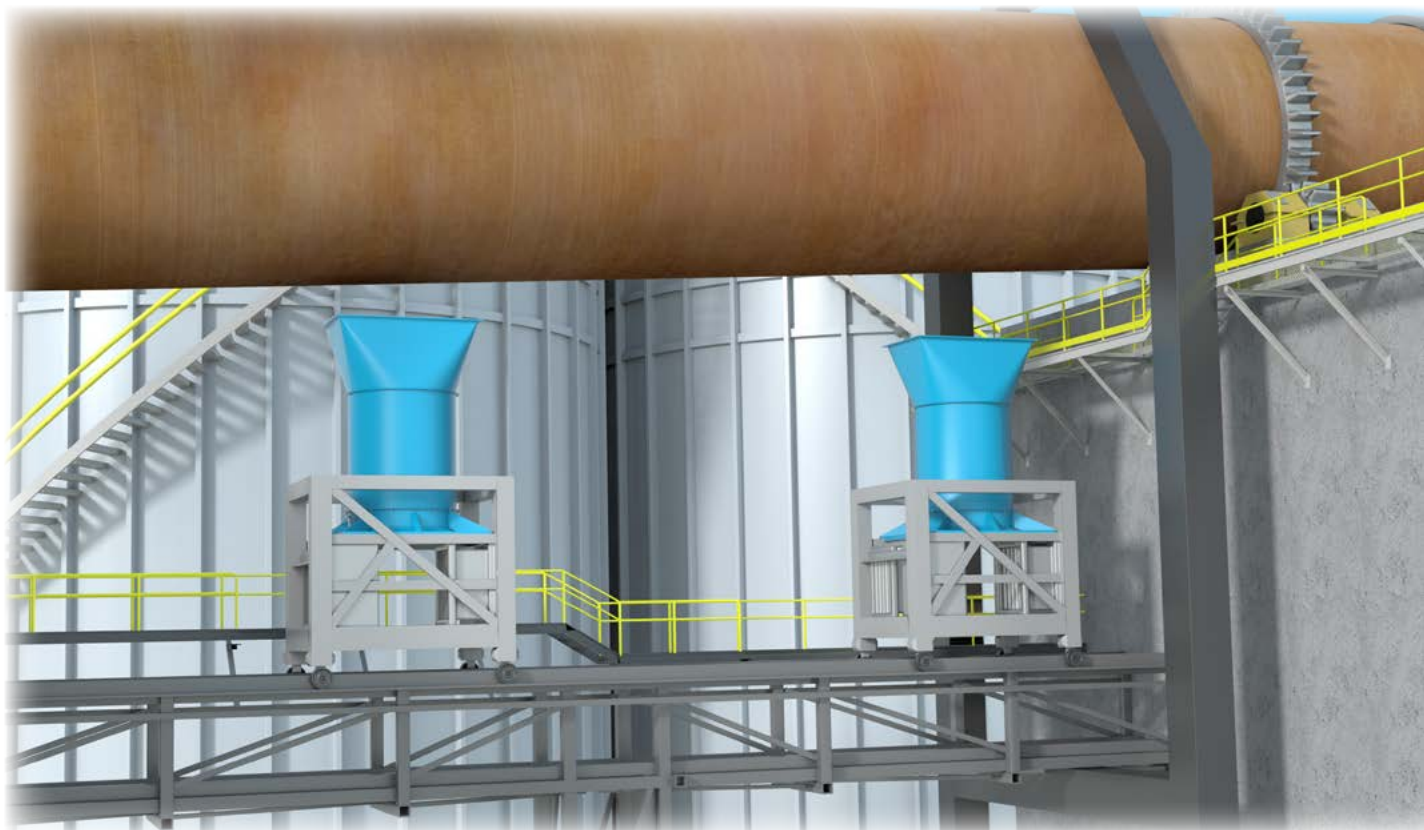
## AXIAL SWINGOUT FANS

Axial swingout fans are designed for frequent cleaning and allow easy access when servicing the unit or when conducting routine maintenance.

- > **Full Swingout Fans:** Impeller shaft and bearings are mounted to the door providing easy access to all components outside of the airstream.
- > **Single & Double Door Clamshell:** Large, hinged access doors provide easy access to the fan components. Impeller, shaft and bearings are mounted to the housing and stay in the airstream when the doors are opened.
- > **Common Applications:** Paint Finishing Systems, Pulp/ Paper Production, Heat Recovery Steam Generators, Potash Production, Slurry Prep Facilities, Steel and Aluminum Foundries

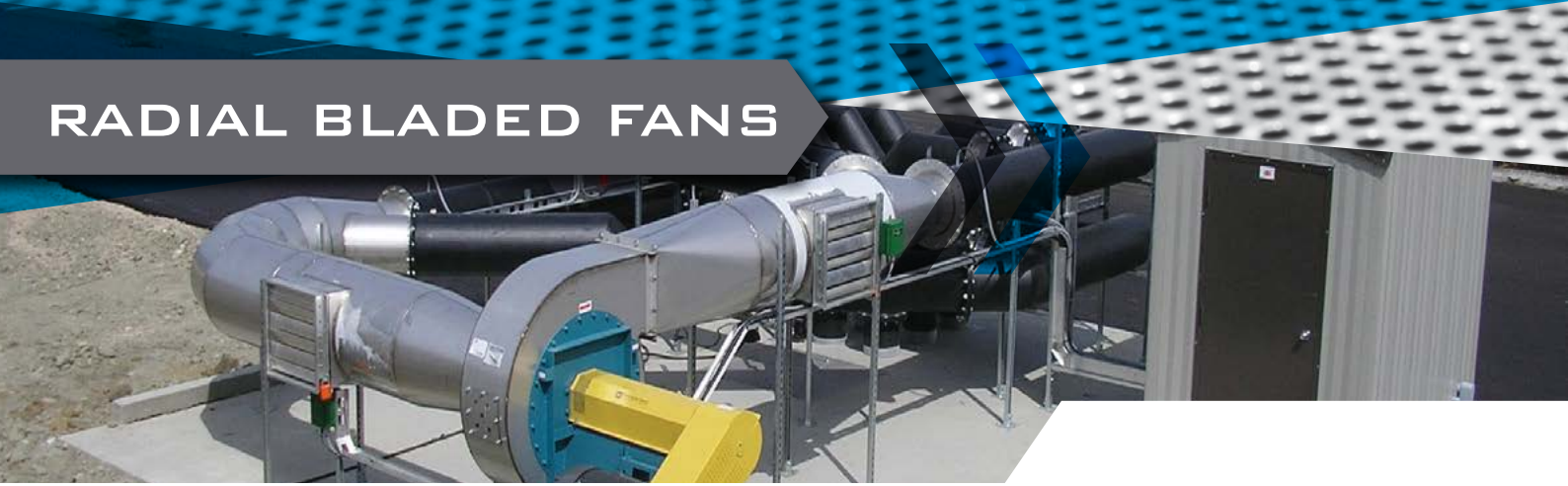


Vertical Roof Mount Warehouse Application (Model TCTA)



Cement Kiln Application (Model TCXV)

# RADIAL BLADED FANS



## OVERVIEW



Model RBO  
Recirculation Fan for Melting Plastic

### RADIAL BLADED FANS

Radial bladed fans provide a solution for a wide range of industrial applications. The heavy-gauge, all-welded construction has earned it the reputation of being the “workhorse” of the industry — a design proven by years of service handling dirty, abrasive, sticky or bulky particulate-laden airstreams. With multiple sizes and materials available, there is a fan available to meet the applications needs.

### IMPELLER TYPES

Fabricated Paddle Impellers, Wool Impellers with Back Plate & Heavy Gusseted Bulk Material Handling Impellers, Fiberglass, Cast Aluminum Radial or Backward Curved

### TYPICAL INDUSTRIES

Aerospace, Agriculture, Air Pollution Control, Asphalt, Automotive, Boilers, Brick, Cement, Chemical, Coal, Composting, Ethanol, Foundry, General Manufacturing, Glass, Industrial Processes, Metal & Minerals, Mining, Nuclear, OEM, Petrochemical, Pharmaceutical, Power Generation, Pulp & Paper, Recycling, Textile, Water Treatment

### COMMON ACCESSORIES

Access Door, Belt Guards, Drain, Inlet/Outlet Companion Flange, Inlet/Outlet Damper, Inlet Filter, Inlet/Outlet Flange, Inlet/Outlet Screen, Inlet/Outlet Silencer, Shaft & Bearing Guard, Shaft Seal, Split Housing, Vibration Isolation, Special Coatings, Insulated Housings

### OPTIONAL CONSTRUCTION

Abrasion Resistant Construction, High Temperature Construction, Nominally Leak-Tight Construction, Spark Resistant Construction (Type A, B and C), Special Materials



Model TPB  
Hospital Exhaust



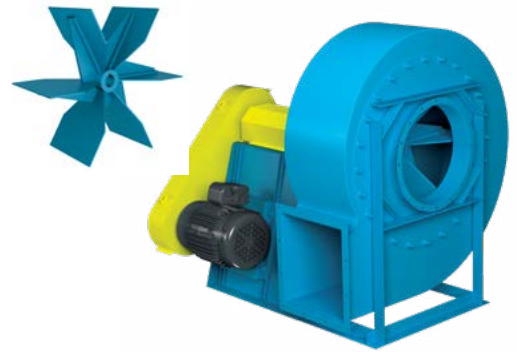
Model RBO  
Sawdust Mill



### RBO

INDUSTRIAL RADIAL BLADE FAN, PADDLE IMPELLER

- > 225 mm to 2,650 mm (8.75 to 104.25 inches) impeller diameters
- > Airflow to 240,900 m<sup>3</sup>/hour (141,800 CFM)
- > Static pressure to 11,440 Pa (46 inches w.g.)
- > AMCA licensed for Air and Fan Energy Index
- > **Typical Applications:** Dust Collection, Pneumatic Conveying, Water Treatment, Explosion-Proof Processes, General HVAC, Air Pollution Control, Material Handling, High Temperature

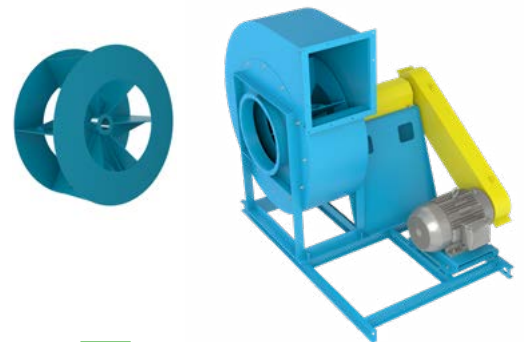


☰ CATALOG 902

### RBR

INDUSTRIAL RADIAL BLADE FAN, PADDLE IMPELLER

- > 1,150 mm to 2,165 mm (45.13 to 85.25 inches) impeller diameters
- > Airflow to 161,100 m<sup>3</sup>/hour (94,800 CFM)
- > Static pressure to 11,440 Pa (46 inches w.g.)
- > AMCA licensed for Air and Fan Energy Index
- > **Typical Applications:** Dust Collection, Pneumatic Conveying, Water Treatment, Explosion-Proof Processes, General HVAC, Air Pollution Control, Material Handling, High Temperature

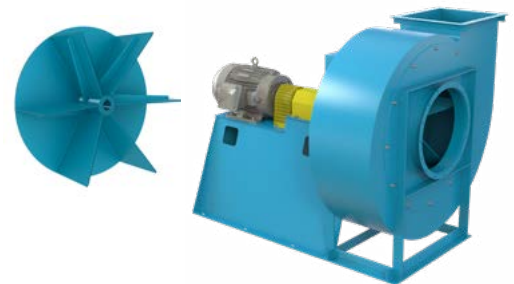


☰ CATALOG 902

### RBW

INDUSTRIAL RADIAL BLADE FAN, BACK PLATE WOOL IMPELLER

- > 225 mm to 2,650 mm (8.75 to 104.25 inches) impeller diameters
- > Airflow to 240,900 m<sup>3</sup>/hour (141,800 CFM)
- > Static pressure to 11,440 Pa (46 inches w.g.)
- > AMCA licensed for Air and Fan Energy Index
- > **Typical Applications:** Dust Collection, Pneumatic Conveying, Water Treatment, Explosion-Proof Processes, General HVAC, Air Pollution Control, Material Handling, High Temperature

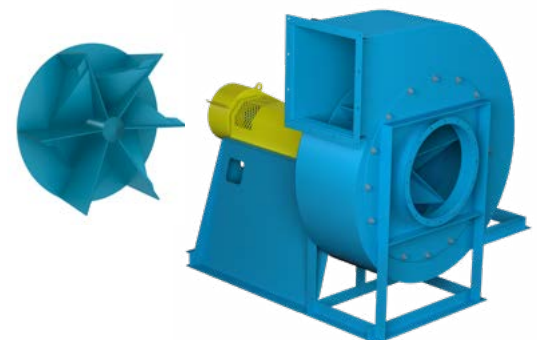


☰ CATALOG 902

### RBP

INDUSTRIAL RADIAL BLADE FAN, PAPER HANDLING IMPELLER

- > 485 mm to 1,150 mm (19.13 to 45.13 inches) impeller diameters
- > Airflow to 45,000 m<sup>3</sup>/hour (26,500 CFM)
- > Static pressure to 7,960 Pa (32 inches w.g.)
- > **Typical Applications:** Dust Collection, Pneumatic Conveying, Water Treatment, Explosion-Proof Processes, General HVAC, Air Pollution Control, Material Handling, High Temperature



☰ CATALOG 902



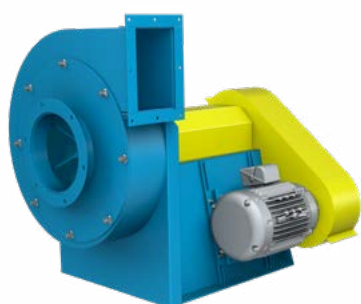
CATALOG 902



## RBA

INDUSTRIAL RADIAL BLADE FAN, AIR HANDLING IMPELLER

- > 315 mm to 2,650 mm (12.25 to 104.25 inches) impeller diameters
- > Airflow to 240,900 m<sup>3</sup>/hour (141,800 CFM)
- > Static pressure to 11,440 Pa (46 inches w.g.)
- > AMCA licensed for Air and Fan Energy Index
- > **Typical Applications:** High Temperature, Pneumatic Conveying, Explosion-Proof Processes, Dust Collection, Water Treatment, Process Cooling, Drying Applications, General HVAC, Air Pollution Control

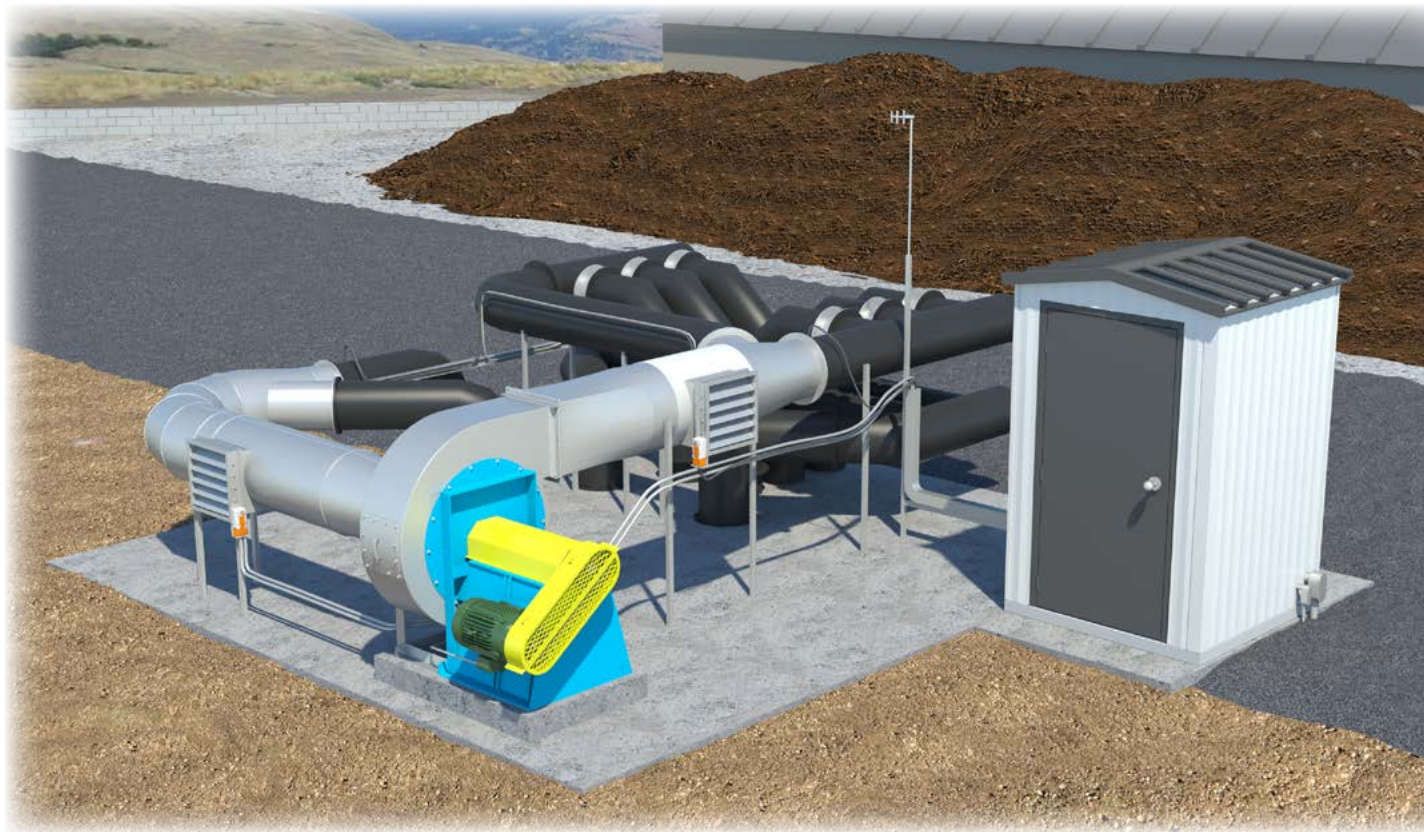


CATALOG 800

## JRW

COMPACT DESIGN INDUSTRIAL FAN

- > 225 mm to 400 mm (8.75 to 15.63 inches) impeller diameters
- > Airflow to 3,400 m<sup>3</sup>/hour (2,000 CFM)
- > Static pressure to 3,480 Pa (14 inches w.g.)
- > **Typical Applications:** Air Pollution Control, Pneumatic Conveying, Boiler Systems, Process Cooling, Exhaust, Water Treatment, Dust Collection, Drying Applications, Explosion-Proof Processes, General HVAC, Vacuum Systems, General Manufacturing



Compost Aeration Application (Model RBA)



Dust Collection Application (Model JRW)

# RADIAL TIP & HIGH EFFICIENCY FANS



## OVERVIEW



Model HIB  
Composting

### RADIAL TIP & HIGH EFFICIENCY FANS

Radial tip and high efficiency fans offer great efficiencies for a wide range of applications requiring high airflow and moderate pressures. The non-overloading design can handle high temperatures, corrosive airstreams and light particulate where the radial tip designs are better suited for dirty, particulate-laden air. With high airflows the radial tip fan is much more efficient than the comparable radial blade fan.



Model HAF  
Pneumatic Dust Collection

### IMPELLER TYPES

High Efficiency Non-Overloading Backward Curved & Airfoil, Self-Cleaning Radial Tip

### TYPICAL INDUSTRIES

Asphalt, Boiler, Brick, Cement, Chemical, Coal, Ethanol, Foundry, Glass, Industrial Processes, Metal & Minerals, Mining, Nuclear, Petrochemical, Power Generation, Pulp & Paper, Water Treatment

### COMMON ACCESSORIES

Access Door, Belt Guards, Evasé, Drain, Inlet/Outlet Companion Flange, Inlet/Outlet Screen, Piezometer Ring Airflow Measurement System, Shaft & Bearing Guards, Shaft Seal, Split Housing, Inlet Box, Inlet/Outlet Dampers, Bases, Special Coatings, Insulated Housings

### OPTIONAL CONSTRUCTION

Special Width & Diameter Impellers, High Temperature, Nominally Leak-Tight Construction, Spark Resistant Construction (Type A, B and C)



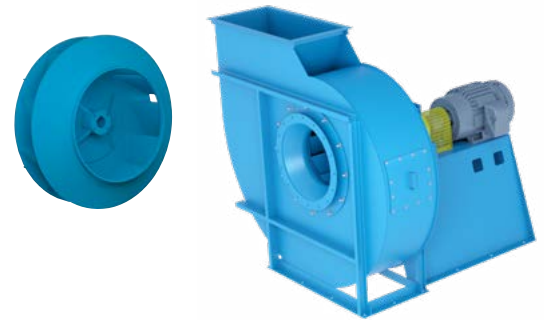
Model HIB  
DeNOx Process



## HAF

### HIGH EFFICIENCY INDUSTRIAL AIRFOIL FAN

- > 635 mm to 2,085 mm (25 to 82 inches) impeller diameters
- > Airflow to 271,800 m<sup>3</sup>/hour (160,000 CFM)
- > Static pressure to 12,430 Pa (50 inches w.g.)
- > **Typical Applications:** Drying Applications, Process Cooling, Exhaust, Dust Collection, Explosion-Proof Processes, Forced Draft, Induced Draft, Process Ventilation, Water Treatment, Pollution Control

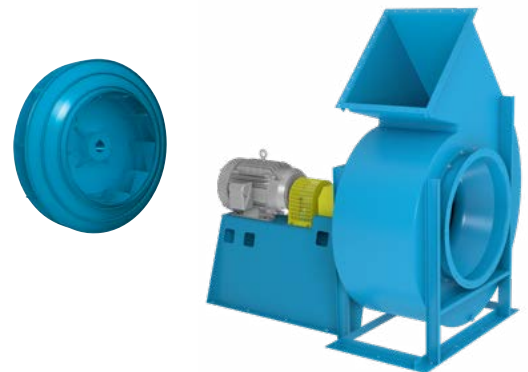


 CATALOG 1150

## HIB

### HIGH EFFICIENCY INDUSTRIAL BACKWARD CURVED FAN

- > 520 mm to 2,310 mm (20.5 to 90.75 inches) impeller diameters
- > Airflow to 301,600 m<sup>3</sup>/hour (177,500 CFM)
- > Static pressure to 8,950 Pa (36 inches w.g.)
- > **Typical Applications:** Drying Applications, Process Cooling, Exhaust, Dust Collection, Explosion-Proof Processes, Forced Draft, Induced Draft, Process Ventilation, Water Treatment, Pollution Control

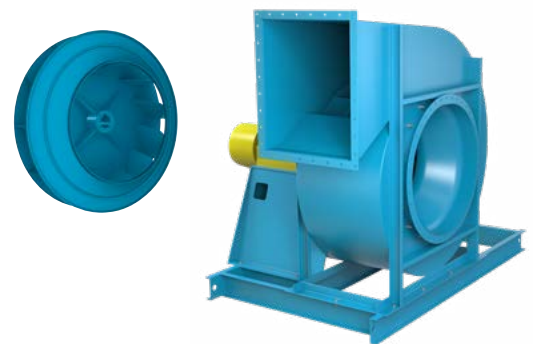


 CATALOG 1100

## RTF

### RADIAL TIP FAN

- > 520 mm to 2,305 mm (20.5 to 90.75 inches) impeller diameters
- > Airflow to 380,200 m<sup>3</sup>/hour (223,800 CFM)
- > Static pressure to 8,950 Pa (36 inches w.g.)
- > **Typical Applications:** Exhaust Applications, Dust Collection, Explosion-Proof Processes, Induced Draft, Material Handling, Air Pollution Control, Process Ventilation, Pollution Control, Vacuum Systems, General Manufacturing

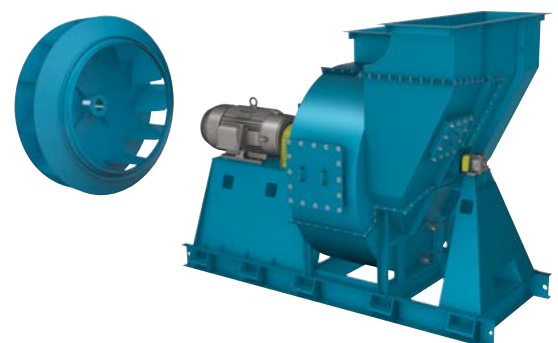


 CATALOG 950

## HRT

### RADIAL TIP FAN, HIGH SPECIFIC SPEED

- > 685 mm to 2,055 mm (27 to 80.75 inches) impeller diameters
- > Airflow to 432,700 m<sup>3</sup>/hour (254,700 CFM)
- > Static pressure to 7,960 Pa (32 inches w.g.)
- > **Typical Applications:** Exhaust Applications, Dust Collection, Explosion-Proof Processes, Induced Draft, Material Handling, Air Pollution Control, Process Ventilation, Pollution Control, Vacuum Systems, General Manufacturing



 CATALOG 980

# PRESSURE BLOWERS



## OVERVIEW



Model TBR  
NOx Exhaust

### PRESSURE BLOWERS

Pressure blowers are ideal for applications requiring high pressures at relatively low volumes of air. Pressure blower performance will remain stable through the operating range and can be turned down to zero flow via a discharge damper. Twin City Fan & Blower offers a wide range of fan types and sizes to meet clean or particulate-laden airstream applications.



Model MBO  
Flue Gas Recirculation

### IMPELLER TYPES

Backward Curved, Backward Inclined & Radial Fabricated Impellers in Open or Shrouded Designs, Fiberglass, Cast Aluminum Radial or Backward Curved

### TYPICAL INDUSTRIES

Air Pollution Control, Asphalt, Boilers, Brick, Cement, Chemical, Coal, Composting, Ethanol, Food & Beverage, Foundry, General Manufacturing, Glass, Industrial Processes, Metal & Minerals, Microchip, Mining, Nuclear, Petrochemical, Pharmaceutical, Power Generation, Pulp & Paper, Recycling, Textile, Transportation, Water Treatment



Model TPB  
Hospital Ventilation

### COMMON ACCESSORIES

Access Door, Belt Guards, Drain, Evasé, Inlet Bell, Inlet Box, Inlet/Outlet Companion Flange, Inlet/Outlet Damper, Inlet Filter, Inlet/Outlet Flange, Inlet/Outlet Screen, Inlet/Outlet Silencer, Outlet Blast Gate, Shaft & Bearing Guard, Shaft Seal, Split Housing, Vibration Isolation, Special Coatings, Insulated Housings

### OPTIONAL CONSTRUCTION

High Temperature Construction, Nominally Leak-Tight Construction, Spark Resistant Construction (Type A, B and C), Special Materials



Model TBR  
Process Fan



## TBNA

TURBO PRESSURE BLOWER, ALUMINUM IMPELLER

- > 370 mm to 970 mm (14.5 to 38 inches) impeller diameters
- > Airflow to 34,000 m<sup>3</sup>/hour (20,000 CFM)
- > Static pressure to 31,820 Pa (128 inches w.g.)
- > **Typical Applications:** Air Pollution Control, Process Cooling, Dust Collection, Explosion-Proof Processes, Drying Applications, Vacuum Systems, Process Applications, General Manufacturing, Exhaust, Wastewater Treatment, Combustion Air



 CATALOG 1250

## TBNS

TURBO PRESSURE BLOWER, STEEL IMPELLER

- > 370 mm to 970 mm (14.5 to 38 inches) impeller diameters
- > Airflow to 34,000 m<sup>3</sup>/hour (20,000 CFM)
- > Static pressure to 31,820 Pa (128 inches w.g.)
- > **Typical Applications:** Air Pollution Control, Process Cooling, Dust Collection, Explosion-Proof Processes, Drying Applications, Material Handling, Pneumatic Conveying, Process Applications, Wastewater Treatment, Vacuum Systems, Combustion Air, Exhaust, General Manufacturing



 CATALOG 1250

## TBA

TURBO PRESSURE BLOWER, AIR HANDLING IMPELLER

- > 285 mm to 815 mm (11.19 to 32.06 inches) impeller diameters
- > Airflow to 48,800 m<sup>3</sup>/hour (28,700 CFM)
- > Static pressure to 17,400 Pa (70 inches w.g.)
- > **Typical Applications:** Air Pollution Control, Process Cooling, Dust Collection, Explosion-Proof Processes, Drying Applications, Vacuum Systems, Process Applications, General Manufacturing, Exhaust, Wastewater Treatment, Combustion Air

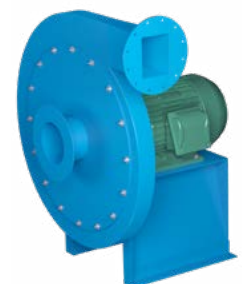


 CATALOG 1200

## TBR

TURBO PRESSURE BLOWER, RADIAL BLADED IMPELLER

- > 275 mm to 895 mm (10.75 to 35.19 inches) impeller diameters
- > Airflow to 17,200 m<sup>3</sup>/hour (10,100 CFM)
- > Static pressure to 25,860 Pa (104 inches w.g.)
- > **Typical Applications:** Air Pollution Control, Process Cooling, Dust Collection, Explosion-Proof Processes, Drying Applications, Vacuum Systems, Process Applications, General Manufacturing, Exhaust, Wastewater Treatment, Combustion Air



 CATALOG 1200

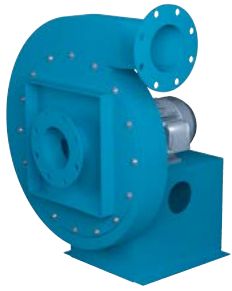
## BCN

BACKWARD CURVED HIGH PRESSURE FAN

- > 685 mm to 1,855 mm (27 to 73 inches) impeller diameters
- > Airflow to 127,400 m<sup>3</sup>/hour (75,000 CFM)
- > Static pressure to 24,860 Pa (100 inches w.g.)
- > **Typical Applications:** Air Pollution Control, Boiler Systems, Exhaust, Process Cooling, Dust Collection, Forced Draft, Explosion-Proof Processes, Water Treatment, General HVAC, Process Applications, General Manufacturing, Combustion Air, Drying



 CATALOG 1450

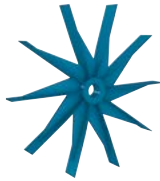


CATALOG 1260

### PBW

PRESSURE BLOWER, BACK PLATE RADIAL

- > 485 mm to 660 mm (19 to 26 inches) impeller diameters
- > Airflow to 13,100 m<sup>3</sup>/hour (7,700 CFM)
- > Static pressure to 14,920 Pa (60 inches w.g.)
- > **Typical Applications:** Textile Fiber Stripping and Recycling, Air Pollution Control, Process Cooling, Dust Collection, Explosion-Proof Processes, Drying Applications, Material Handling, Pneumatic Conveying, Process Applications, Wastewater Treatment, Vacuum Systems, Combustion Air, Exhaust, General Manufacturing



CATALOG 1400

### MBO

HEAVY-DUTY PRESSURE BLOWER, OPEN RADIAL

- > 500 mm to 1,500 mm (19.63 to 58.94 inches) impeller diameters
- > Airflow to 30,600 m<sup>3</sup>/hour (18,000 CFM)
- > Static pressure to 42,270 Pa (170 inches w.g.)
- > **Typical Applications:** Air Pollution Control, Dust Collection, Exhaust, Process Cooling, Explosion-Proof Processes, General HVAC, Drying Applications, Vacuum Systems, Material Handling, Pneumatic Conveying, Wastewater Treatment, Process Applications, Combustion Air

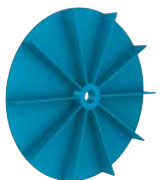
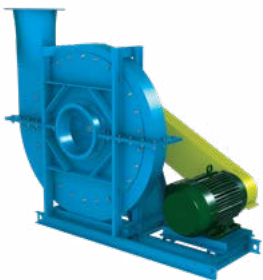


CATALOG 1400

### MBR

HEAVY-DUTY PRESSURE BLOWER, HIGH PRESSURE AIR HANDLING

- > 500 mm to 1,500 mm (19.63 to 58.94 inches) impeller diameters
- > Airflow to 30,600 m<sup>3</sup>/hour (18,000 CFM)
- > Static pressure to 44,750 Pa (180 inches w.g.)
- > **Typical Applications:** Air Pollution Control, Dust Collection, Exhaust, Process Cooling, Explosion-Proof Processes, General HVAC, Drying Applications, Vacuum Systems, Material Handling, Pneumatic Conveying, Wastewater Treatment, Process Applications, Combustion Air



CATALOG 1400

### MBW

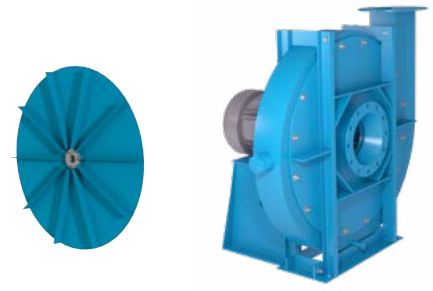
HEAVY-DUTY PRESSURE BLOWER, BACK PLATE RADIAL

- > 500 mm to 1,500 mm (19.63 to 58.94 inches) impeller diameters
- > Airflow to 34,000 m<sup>3</sup>/hour (20,000 CFM)
- > Static pressure to 39,780 Pa (160 inches w.g.)
- > **Typical Applications:** Air Pollution Control, Dust Collection, Exhaust, Process Cooling, Explosion-Proof Processes, Drying, General HVAC, Vacuum Systems, Material Handling, Pneumatic Conveying, Wastewater Treatment, Process Applications, Combustion Air

## HRO

HIGH PRESSURE RADIAL PRESSURE BLOWER, OPEN IMPELLER

- > 505 mm to 1,555 mm (19.75 to 61.25 inches) impeller diameters
- > Airflow to 14,400 m<sup>3</sup>/hour (8,500 CFM)
- > Static pressure to 25,610 Pa (103 inches w.g.)
- > **Typical Applications:** Air Pollution Control, Dust Collection, Process Cooling, Explosion-Proof Processes, Drying Applications, Exhaust, Vacuum Systems, Material Handling, Pneumatic Conveying, Wastewater Treatment, Process Applications, Combustion Air, General HVAC

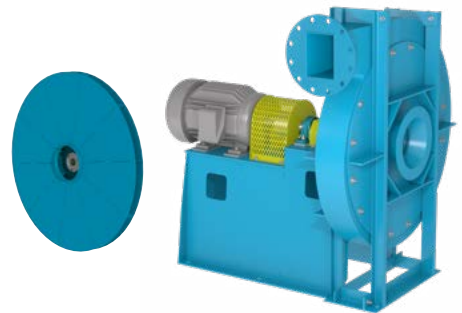


 CATALOG 1300

## HRS

HIGH PRESSURE RADIAL PRESSURE BLOWER, SHROUDED IMPELLER

- > 505 mm to 1,555 mm (19.75 to 61.25 inches) impeller diameters
- > Airflow to 17,000 m<sup>3</sup>/hour (10,000 CFM)
- > Static pressure to 29,840 Pa (120 inches w.g.)
- > **Typical Applications:** Air Pollution Control, Dust Collection, Process Cooling, Explosion-Proof Processes, Drying Applications, Vacuum Systems, Material Handling, Exhaust, Pneumatic Conveying, Wastewater Treatment, Process Applications, Combustion Air, General HVAC

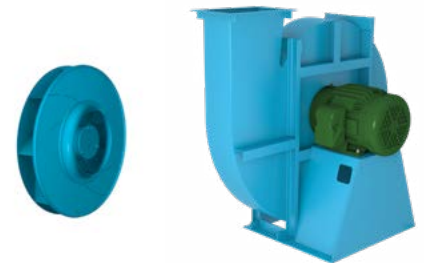


 CATALOG 1300

## RVP

BACKWARD CURVED HIGH PRESSURE FAN

- > 315 mm to 2,500 mm (12.4 to 98.4 inches) impeller diameters
- > Airflow to 250,000 m<sup>3</sup>/hour (147,100 CFM)
- > Static pressure to 16,000 Pa (60 inches w.g.)
- > **Typical Applications:** Air Pollution Control, Boiler Systems, Exhaust, Process Cooling, Dust Collection, Forced Draft, Explosion-Proof Processes, Water Treatment, General HVAC, Process Applications, General Manufacturing, Combustion Air, Drying

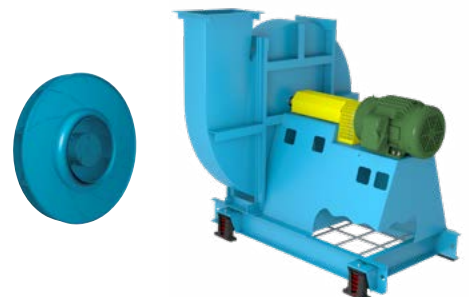


 CATALOG VP 123396

## RVP-DW

BACKWARD CURVED HIGH PRESSURE FAN

- > 1,000 mm to 2,500 mm (39 to 98.4 inches) impeller diameters
- > Airflow to 500,000 m<sup>3</sup>/hour (294,300 CFM)
- > Static pressure to 12,000 Pa (48 inches w.g.)
- > **Typical Applications:** Air Pollution Control, Boiler Systems, Exhaust, Process Cooling, Dust Collection, Forced Draft, Explosion-Proof Processes, Water Treatment, General HVAC, Process Applications, General Manufacturing, Combustion Air, Drying



 CATALOG VP 123399

# SMOKE & HEAT EXHAUST FANS



## OVERVIEW

### SMOKE & HEAT EXHAUST FANS

Emergency smoke exhaust systems are designed to remove smoke and heat from buildings in the event of a fire. These systems play a crucial role in increasing occupant safety and allowing rescue personnel to safely enter burning buildings. Twin City Fan & Blower offers a full line of smoke and heat fans capable of withstanding a minimum temperature of 500°F for four hours or 1,000°F for 15 minutes. Our inline smoke and heat fans are also available in a vertical roof mount or horizontal discharge configuration featuring a stack cap with butterfly dampers and a fusible link designed to stay open in the event of a fire.

### IMPELLER TYPES

Backward Inclined Centrifugal, Mixed Flow, Axial

### COMMON ACCESSORIES

Belt Tube, Copper Extended Lube Lines, Access Doors, Belt Guards, Motor Covers, Inlet/Outlet Screens and Guards, Inlet/Outlet Companion Flanges, Insulated Jackets, Vented Roof Curbs, Special Coatings and Disconnect Switches

### CERTIFICATIONS

AMCA Sound/Air and FEI, UL 705 Listed for Electrical, UL Listed for Smoke Control Systems

### APPLICATIONS

General Emergency Smoke Exhaust, Elevator Shaft Exhaust/Pressurization, Stairwell Pressurization



Model QCLBSH  
Emergency Smoke Exhaust



Model TCVSSH  
Elevator Shaft Exhaust



Model QSLSH  
Smoke Control - Amphitheater



## BCVSH

SMOKE & HEAT FLAT-BLADED BACKWARD INCLINED UTILITY SETS, UL LISTED FOR SMOKE CONTROL SYSTEMS

- > 315 mm to 1,525 mm (12.25 to 60 inches) impeller diameters
- > Airflow to 133,600 m<sup>3</sup>/hour (78,660 CFM)
- > Static pressure to 1,990 Pa (8 inches w.g.)
- > AMCA licensed for Sound, Air and Fan Energy Index
- > UL listed for Smoke Control Systems

## QCLBSH

SMOKE & HEAT LOW PRESSURE MIXED FLOW FAN,  
UL LISTED FOR SMOKE CONTROL SYSTEMS

- > 315 mm to 1,855 mm (12.25 to 73 inches) impeller diameters
- > Airflow to 178,400 m<sup>3</sup>/hour (105,000 CFM)
- > Static pressure to 1,120 Pa (4.5 inches w.g.)
- > AMCA licensed for Sound, Air and Fan Energy Index
- > UL listed for Smoke Control Systems



 CATALOG 1070

## QSLSH

SMOKE & HEAT MIXED FLOW FAN,  
UL LISTED FOR SMOKE CONTROL SYSTEMS

- > 465 mm to 2,260 mm (18.25 to 89 inches) impeller diameters
- > Airflow to 271,800 m<sup>3</sup>/hour (160,000 CFM)
- > Static pressure to 1,990 Pa (8 inches w.g.)
- > AMCA licensed for Sound, Air and Fan Energy Index
- > UL listed for Smoke Control Systems



 CATALOG 1060

## TCVSSH

SMOKE & HEAT VANEAXIAL FAN, STEEL IMPELLER  
UL LISTED FOR SMOKE CONTROL SYSTEMS

- > 305 mm to 1,375 mm (12 to 54 inches) impeller diameters
- > Airflow to 135,900 m<sup>3</sup>/hour (80,000 CFM)
- > Static pressure to 990 Pa (4 inches w.g.)
- > UL listed for Smoke Control Systems



 CATALOG AX255

## TCTSSH

SMOKE & HEAT TUBEAXIAL FAN, STEEL IMPELLER  
UL LISTED FOR SMOKE CONTROL SYSTEMS

- > 305 mm to 1,375 mm (12 to 54 inches) impeller diameters
- > Airflow to 135,900 m<sup>3</sup>/hour (80,000 CFM)
- > Static pressure to 990 Pa (4 inches w.g.)
- > UL listed for Smoke Control Systems



 CATALOG AX255

Pages 8-11

**CENTRIFUGAL FANS**



BC-SW



BC-DW



BAE-SW



BAE-DW



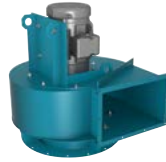
BCS



BAF-SW



BAF-DW



TCBI

Pages 12-13

**UTILITY SETS**



BCV / BCVR / BCVSH



BAV

Pages 14-17

**INLINE & MIXED FLOW FANS**



TSL



QCLB / QCLBR / QCLBSH



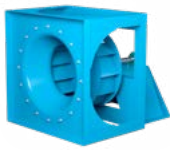
QSL / QSLR / QSLSH

Pages 18-19

**PLENUM FANS**



EPF / EPFN



EPQ / EPQN

Pages 20-21

**PLUG FANS**



BEPL



BCPL



BFPL

Pages 22-33

**WALL MOUNTED FANS**



WPD / WPB



TCWPX / TCWPZ



TCPE

Pages 24-29

**VANEAXIAL FANS**



TCVA



TCVX



TCVS / TCVSSH

Pages 24-29  
**TUBEAXIAL FANS**



TD / TB  
TBSH



TCTA



TCTS / TCTSSH



TCBS

Pages 30-33  
**RADIAL  
BLADED FANS**



RBO / RBR / RBW  
RBA / RBP



JRW

Pages 34-35  
**RADIAL TIP & HIGH  
EFFICIENCY FANS**



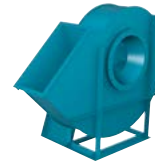
RTF



HRT



HIB



HAF

Pages 36-39  
**PRESSURE BLOWERS**



TBNA / TBNS



TBA / TBR



MBO / MBR / MBW



HRO / HRS



BCN



PBW



RVP / RVP-DW

Pages 40-41  
**SMOKE & HEAT  
EXHAUST FANS**



TBSH



BCVSH



QLSH



TCVSSH / TCTSSH

# INDUSTRIAL PROCESS AND COMMERCIAL VENTILATION SYSTEMS

CENTRIFUGAL FANS | UTILITY SETS | PLENUM & PLUG FANS | INLINE CENTRIFUGAL FANS | MIXED FLOW FANS

TUBEAXIAL & VANEAXIAL FANS | WALL MOUNTED FANS | RADIAL BLADED FANS | RADIAL TIP FANS

HIGH EFFICIENCY INDUSTRIAL FANS | PRESSURE BLOWERS | CUSTOM FANS



[WWW.TCF.EU](http://WWW.TCF.EU)  
[SALES@TCF.CZ](mailto:SALES@TCF.CZ)

PRŮMYSLOVÁ 920, 383 01 PRACHATICE | PHONE: +420-388-317-302

©2026 Twin City Fan Companies, Ltd., Minneapolis, MN. All rights reserved. Catalog illustrations and product listings cover the general appearance and availability of Twin City Fan & Blower products at the time of publication. We reserve the right to make changes in design, construction and availability at any time without notice.